

Services Sector Activity Indicators (SSAI) December 2023 and year 2023. Provisional data

Main results

- The annual variation of the Market Services Sector turnover index was 1.1% in the calendar and seasonally adjusted series.
- In December, the monthly rate was -0.1% if seasonal and calendar effects are removed.
- Throughout the year 2023, the business turnover index increased by 2.7% in the series adjusted for seasonal and calendar effects, and by 2.4% in the original series.

More information

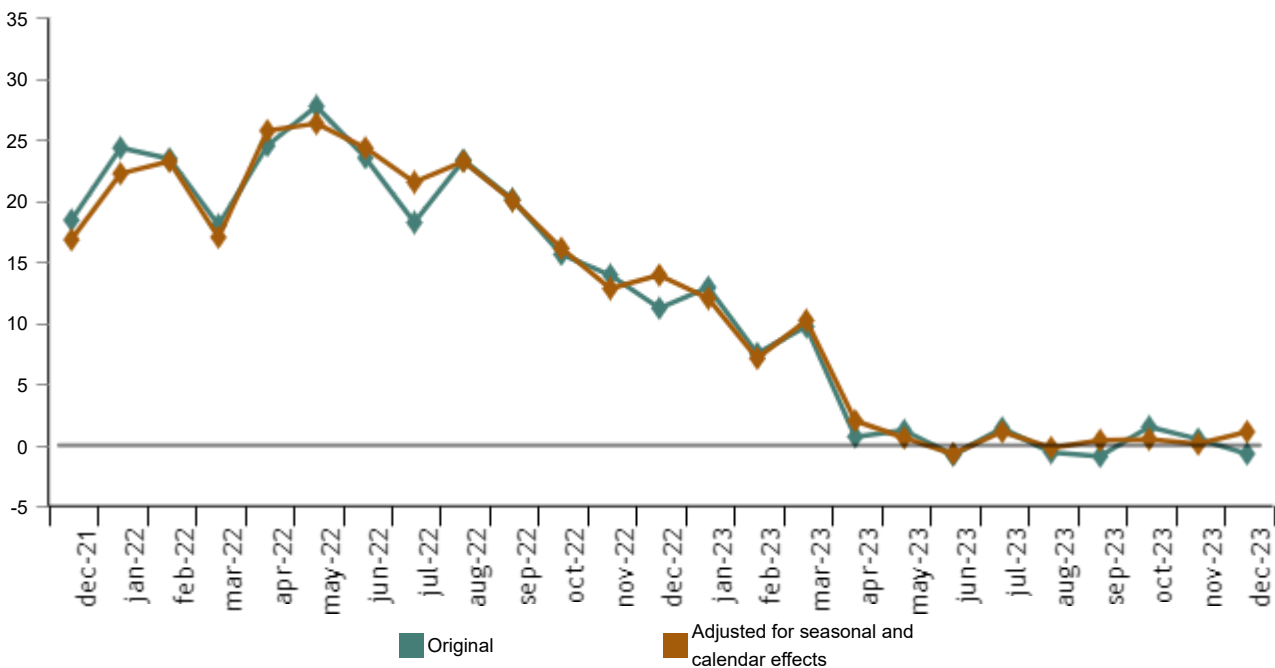
- [Tables annex](#) (includes information by autonomous communities and original and adjusted series by sectors)
- [Detailed results](#) (monthly and annual data)

The general index of the turnover for the Market Services Sector, after adjusting for seasonal and calendar effects, experienced a variation of 1.1% in December compared to the same month of 2022. This rate was one point higher than that recorded in November.

The original series presented an annual variation of -0.7%, which was 1.2 points below that registered in November.

General index of turnover for the Market Services Sector

Annual Rate. Percentage



Annual rates in Turnover index for the Market Services Sector: General and by sector. December 2023

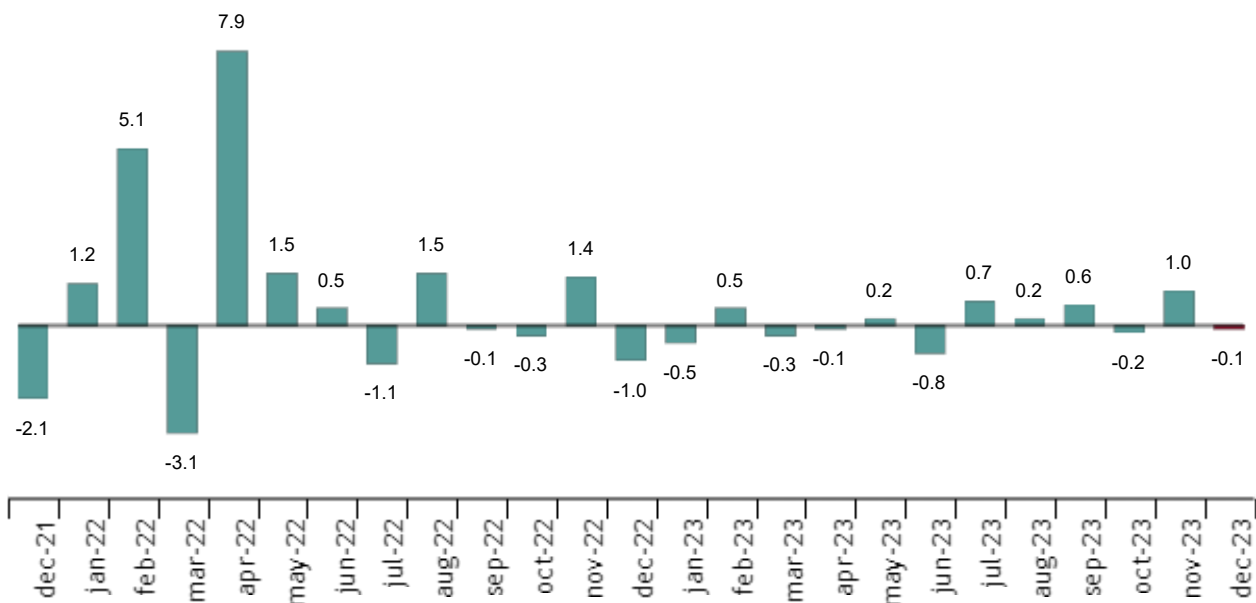
	Original index	Seasonally adjusted index	
	Annual rate (%)	Annual rate (%)	Average year
GENERAL INDEX	-0.7	1.1	2.7
1. TRADE	-2.8	-0.8	0.8
2. OTHER SERVICES	3.6	4.9	6.6

Throughout the year 2023, the business turnover index increased by 2.7% in the series adjusted for seasonal and calendar effects, and by 2.4% in the original series.

Monthly trend in turnover for the Market Services Sector

After adjusting for seasonal and calendar effects, the monthly variation of the general index of turnover for the Market Services Sector between December and November was -0.1%. This rate was 1.1 points lower than that observed in November.

General index of the turnover for the Market Services Sector. Seasonally and calendar adjusted
Monthly rate. Percentage



Results by Autonomous Community. Annual variation rates of the turnover index. Original series

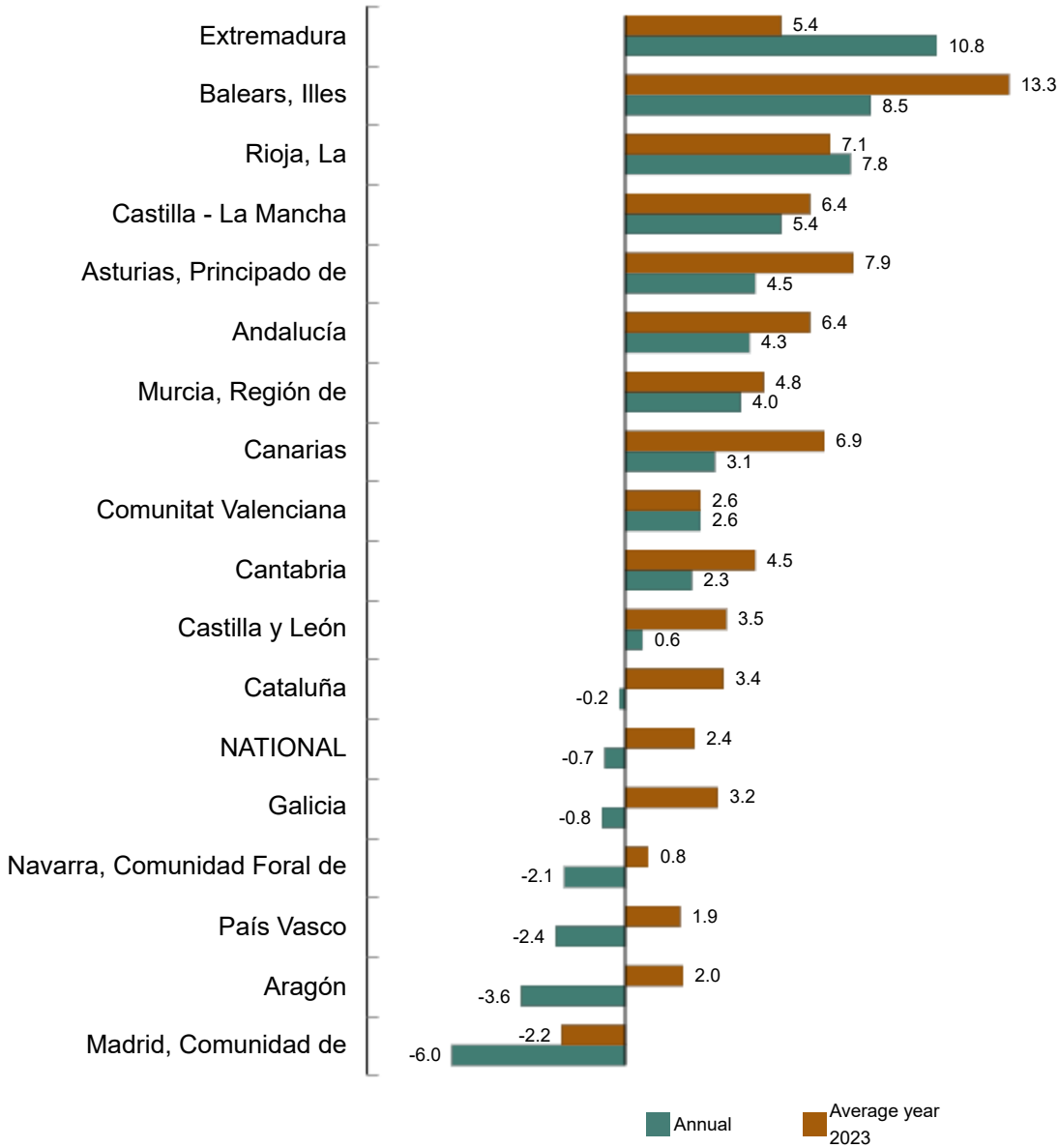
Annual rate in Turnover index for the Market Services Sector increased as compared to December 2022 in 11 Autonomous Communities and decreased in the other six.

Extremadura (10.8%), Illes Balears (8.5%) and La Rioja (7.8%) registered the largest increases. Comunidad de Madrid (-6.0%), Aragón (-3.6%) and País Vasco (-2.4%) recorded the largest decreases.

Throughout the year 2023, all the Autonomous Communities presented positive rates, except Comunidad de Madrid (-2.2%). Illes Balears registered the highest increase (13.3%).

General index of Market Services Sector Turnover by Autonomous Community. December 2023

Annual Rate. Percentage



Current press release at: www.ine.es/dyngs/Prensa/en/IAS1223.htm

Employment trend

The Employment in the Market Services Sector index experienced a variation of 1.8% in December as compared to the same month of the previous year. This rate was two tenths lower than that registered in November.

Throughout the year 2023, employment increased by an average of 1.9%.

National Indices of employed personnel by sector. December 2023

	Index	Rate (%)		
		Monthly	Annual	Average year 2023
GENERAL INDEX	111.9	-0.6	1.8	1.9
1.TRADE	110.5	0.0	1.6	1.7
2.OTHER SERVICES	112.8	-1.0	1.9	2.1

Review and update of data

The INE has updated the IASS data for the last five months. In the case of the series adjusted, the series have been reviewed from the beginning, following the INE standard. All results of this operation are available on [INEbase](#).

Base change

The INE publishes today the last data on the Services Sector Activity Indicators in base 2015. The new 2021 base will incorporate important changes, such as the extension of the population scope, the change in the criterion that defines the statistical unit, the updating of the weightings and a significant increase in the use of records from administrative sources.

Methodological note

The Services Sector Activity Indicators (SSAI) measure the short-term evolution of the activity of companies belonging to the Non-Financial Market Services sector through two variables: turnover and employed personnel. Turnover comprises the amounts invoiced by the company for provision of services and sale of goods. Employed personnel include both paid and unpaid personnel.

In order to obtain this data, an ongoing survey is conducted, every month researching more than 28,000 companies that operate in this sector. Results are presented as indices so as to measure variations as compared to the base year 2015.

The characteristics of this statistics are:

Type of survey: monthly continuous survey.

Base year: 2015.

Population scope: companies whose main economic activity is described in sections G, (Trade), H (Transport and Storage), I (Accommodation), J (Information and Communications), M (Professional, Scientific and Technical Activities) and N (Administrative and Support Services Activities) of the National Classification of Economic Activities (CNAE-09).

Geographical scope: all the national territory except for Ceuta and Melilla, for which it is only collected in division 47 of CNAE-09 (retail trade).

Sample size: 28,000 companies.


Type of sampling: stratified random sampling.

Collection method: internet (IRIA system), e-mail, fax, telephone or by postal mail.

For more information you can access the [methodology](#) and the [standardised methodological report](#).

INE statistics are produced in accordance with the Code of Good Practice for European Statistics. More information at [Quality at INE](#) and the [Code of Best Practices](#).

For further information see [INE base](#)

Official INE account on  [@es_ine](#)

All press releases at: www.ine.es/en/prensa/prensa_en.htm

 Press office: (+34) 91 583 93 63 / 94 08 – gprensa@ine.es

 Information area: (+34) 91 583 91 00 – www.ine.es/infoine/?L=1