

13 October 2022

## Household Projections 2022-2037

**If current trends are maintained, the number of households in Spain would grow by more than 2.7 million in the next 15 years**

**In 2037 there would be 6.5 million single-person households, or 29.8% of the total**

**The number of households would increase in all Autonomous Communities, except in Principado de Asturias**

The Household Projection 2022 - 2037 reflects the result that the continuation of current demographic trends would have on the number of households. Due to its form of construction, its results are consistent with those of the Population Projections released today<sup>1</sup>.

According to this projection, the number of households resident in Spain would increase by 2,735,555 (14.5%) between 2022 and 2037, reaching the figure of 21,651,673. During the same period, the resident population in Spain would increase by 4,236,335 persons (8.9%).

This would mean a decrease in the number of people living in each household. Thus, the average household size would decrease from the current 2.48 to 2.36 persons in 2037.

### Household Projection in Spain (2022-2037)

Year	Household number at 1 January	Absolute growth (5 years)	Annual average relative growth (%)
2022	18,916,118	1,083,948	1.15
2027	20,000,066	960,127	0.96
2032	20,960,193	691,480	0.66
2037	21,651,673		

### Evolution of the number of households by size

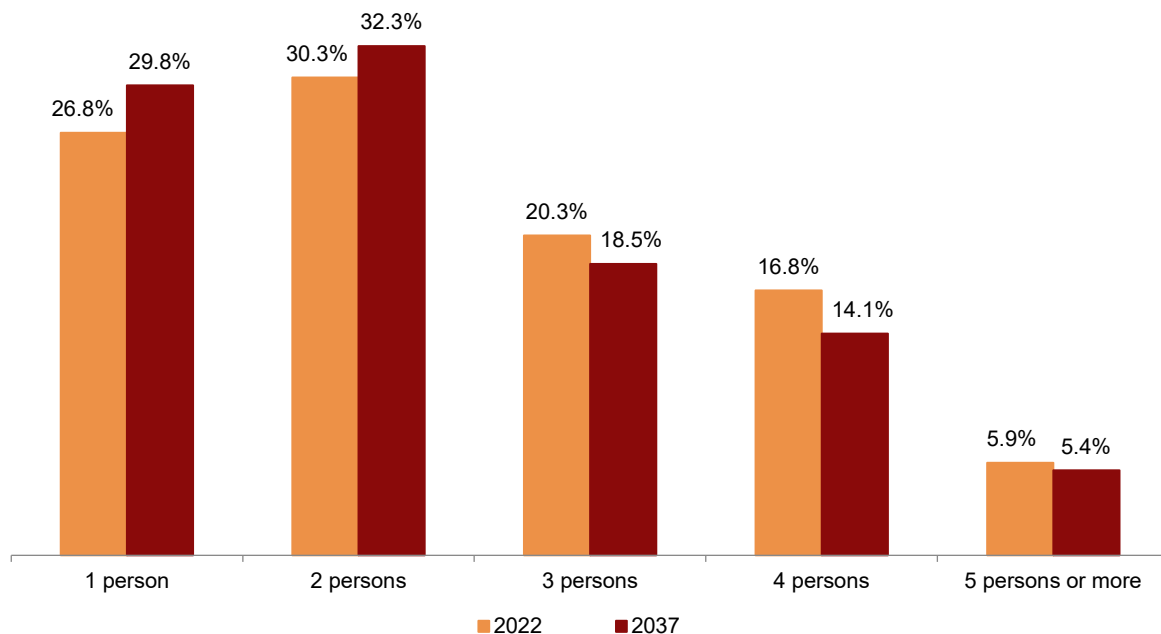
Between 2022 and 2037 the smallest households (of one or two people) will grow and to a lesser extent those of three people, while those of four people would experience a reduction. Those with five or more persons would also continue the growth trend seen in recent years.

<sup>1</sup> Population Projections 2022-2072 (October 13): [https://www.ine.es/prensa/pp\\_2022\\_2072.pdf](https://www.ine.es/prensa/pp_2022_2072.pdf)

## Projected Number of Households by Size (2022-2037)

	1 January 2022	1 January 2037	Growth 2022-2037	
			Absolute	Relative (%)
<b>TOTAL</b>	18,916,118	21,651,673	2,735,555	14.46
1 person	5,066,940	6,450,937	1,383,997	27.3
2 persons	5,727,888	6,988,002	1,260,114	22.0
3 persons	3,834,147	4,000,669	166,522	4.3
4 persons	3,176,268	3,045,956	-130,312	-4.1
5 persons or more	1,110,875	1,166,109	55,234	5.0
Population living in households	46,927,053	51,024,908	4,097,855	8.7
Average size of households	2.48	2.36	-0.12	-5.01

## Evolution of the Proportion of Households by Size (2022-2037)



Single-person households would show the greatest increase in the next 15 years, in both absolute and relative values. In 2037, the number of single-person households would come to 6.5 million (29.8% of the total), an increase of 27.3% compared to the beginning of 2022.

The number of people living alone would increase from 10.7% of the total population in 2022 to 12.5% in 2037.

Two-person households would still be the most frequent type in 2037. They would nearly reach 7.0 million (32.3% of the total), an increase of 22.0% since 2022.

For their part, households with four people would maintain negative growth rates throughout the 2022-2037 period, while those with three people would change the sign of their growth, moving to positive rates. Three person households would increase by 4.3% and four person households would decrease by 4.1%.

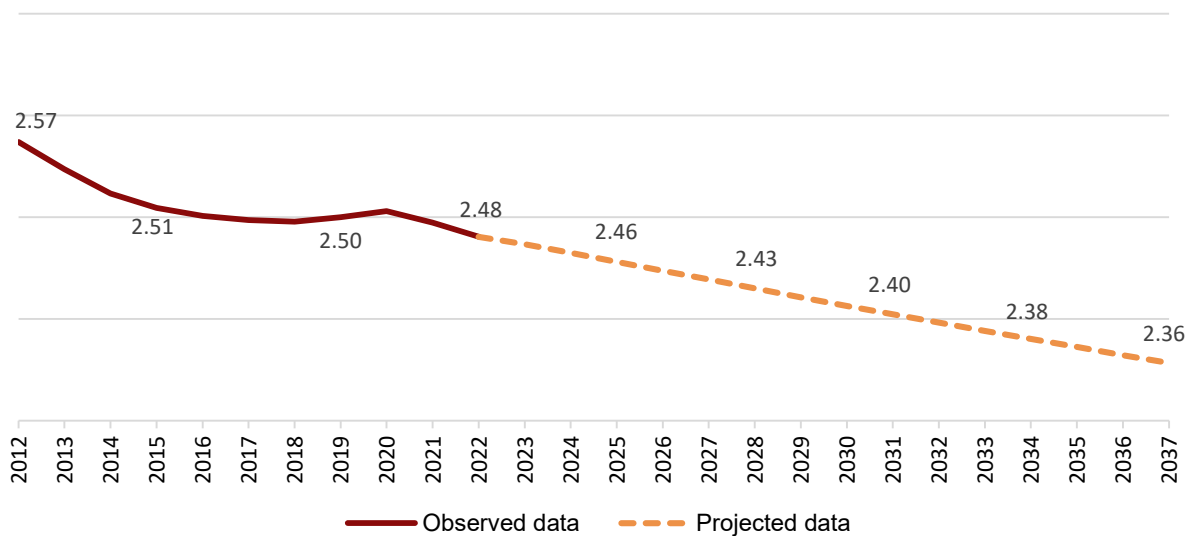
Lastly, households with five or more members would grow by 5.0%, from 1.1 million in 2022 to 1.2 million in 2037.

## Evolution of Average Household Size

The average number of persons per household has maintained a downward trend since the last censuses. It fell from nearly four people in 1970 to 2.9 in 2001, and has continued to decline since then, save for a small rebound in 2020.

This downward trend should continue throughout the projected period, going from an average size of 2.48 people per household in 2022 to 2.36 in 2037.

## Observed (2010-2021) and Projected (2022-2037) Evolution of Average Household Size



## Household projection by Autonomous Community

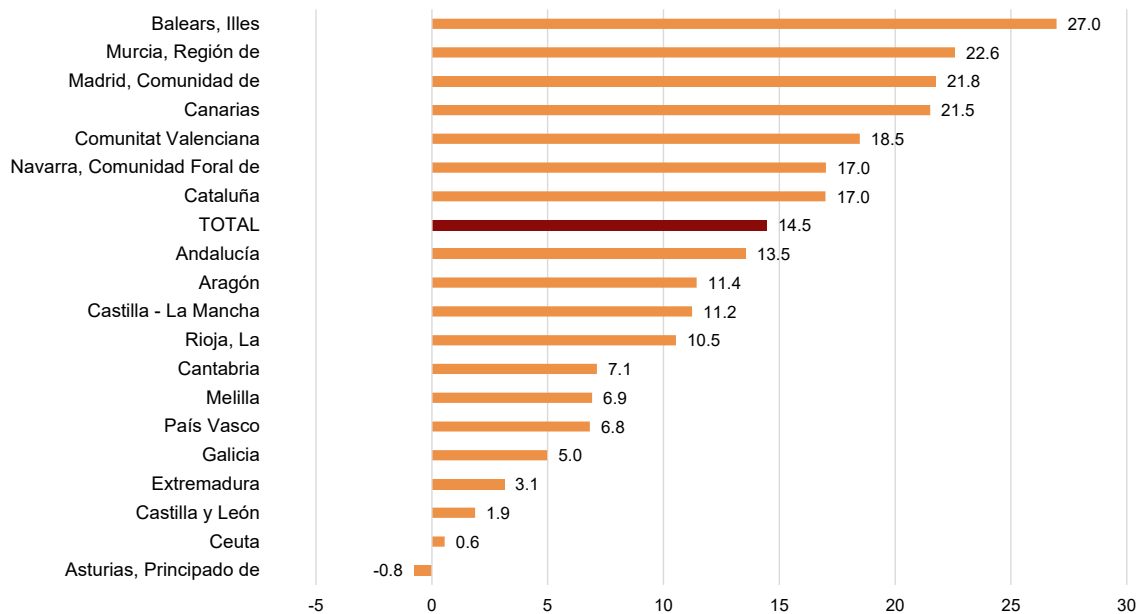
The number of households would increase in all the autonomous communities throughout the 2022-2037 period, except in the Principality of Asturias (-0.8%).

In relative terms, the highest growth in the number of households would occur in Illes Balears (27.0%), Región de Murcia (22.6%) and Comunidad de Madrid (21.8%).

The average size of the household would decrease in all the communities. The largest decreases would be registered in Extremadura and Castilla y León. For its part, the most moderate decreases would occur in Illes Balears, Cataluña and La Rioja.

With regard to the percentage of single-person households, Principado de Asturias would be in the lead (with 36.2% of the total in the year 2037), followed by Castilla y León (35.5%) and Extremadura (33.4%). The Autonomous City of Murcia would have the lowest percentage of single-person households (24.8%), followed by Illes Balears (26.0%) and Canarias (27.3%).

**Projected Growth in the Number of Households by Autonomous Communities (2022-2037). Percentages**



**Projection of the Number of Households by Autonomous Communities (2022-2037)**

	Total households		Growth 2022-2037		Average household size		% of one-person households	
	2022	2037	Absolute	Relative (%)	2022	2037	2022	2037
TOTAL	18,916,118	21,651,673	2,735,555	14.5	2.48	2.36	26.79	29.79
Andalucía	3,296,392	3,743,010	446,618	13.5	2.56	2.38	25.08	28.96
Aragón	544,478	606,715	62,237	11.4	2.37	2.25	28.82	32.14
Asturias, Principado de	455,870	452,399	-3,471	-0.8	2.18	2.05	31.88	36.16
Balears, Illes	465,982	591,656	125,674	27.0	2.61	2.57	24.75	26.00
Canarias	870,608	1,057,881	187,273	21.5	2.57	2.44	25.28	27.26
Cantabria	245,394	262,879	17,485	7.1	2.35	2.21	29.36	33.04
Castilla y León	1,026,244	1,045,400	19,156	1.9	2.26	2.12	31.27	35.55
Castilla - La Mancha	797,049	886,591	89,542	11.2	2.53	2.39	25.58	29.26
Cataluña	3,059,070	3,578,917	519,847	17.0	2.48	2.41	26.63	28.50
Comunitat Valenciana	2,057,331	2,437,387	380,056	18.5	2.45	2.33	27.49	30.35
Extremadura	434,703	448,262	13,559	3.1	2.39	2.20	28.33	33.41
Galicia	1,107,035	1,162,178	55,143	5.0	2.41	2.26	27.43	30.96
Madrid, Comunidad de	2,636,988	3,210,726	573,738	21.8	2.54	2.40	26.04	29.31
Murcia, Región de	558,515	684,661	126,146	22.6	2.71	2.56	22.48	24.82
Navarra, Comunidad Foral de	260,768	305,122	44,354	17.0	2.49	2.37	27.73	30.08
País Vasco	913,974	976,301	62,327	6.8	2.35	2.24	28.88	32.28
Rioja, La	131,647	145,517	13,870	10.5	2.37	2.29	29.59	32.09
Ceuta	27,314	27,465	151	0.6	3.00	2.71	21.68	26.41
Melilla	26,756	28,606	1,850	6.9	3.08	2.78	19.55	24.15

**Data Review and Update**

The data published today update the Household Projection 2020-2035, the results of which are no longer representative.

## Methodological note

The Household Projection provides a statistical simulation of the number of future households in Spain as a whole, in each autonomous community, and in each province, should the currently observed demographic trends continue, as well as household distribution by size. The results are fully consistent with those of the Population Projections.

This operation provides results for the following 15 years, taking as a starting point the number of households on January 1, 2022.

The municipal registers for the years prior to elaboration are used as a statistical tool, which allows us to obtain the evolution of the proportion of people, according to characteristics of sex, age and province of residence, residing in households with one, two, three, four or five or more members.

There are no international regulatory standards for household projections, so any projections produced by other international agencies would serve their own purposes, methodologies and assumptions, and their results would generally not coincide with each other or with those of this operation.

**Operation type:** synthesis statistics, prepared from results from different sources on past and present demographic evolution.

**Population scope:** households in the national territory, with household defined as the person or group of persons who habitually reside in a family dwelling.

**Geographical scope:** national, Autonomous Communities and Cities and provinces.

**Reference period of the results:** household data are provided as at 1 January of the 15 years following the year of compilation.

**Frequency of dissemination:** biennial as of 2014.

For more information the methodology can be accessed at:

[https://www.ine.es/dyngs/INEbase/es/operacion.htm?c=Estadistica\\_C&cid=1254736176954&menu=metodologia&idp=1254735572981](https://www.ine.es/dyngs/INEbase/es/operacion.htm?c=Estadistica_C&cid=1254736176954&menu=metodologia&idp=1254735572981)

The standardized methodological report is at:

<https://www.ine.es/dynt3/metadatos/es/RespuestaDatos.html?oe=30276>

---

For further information see **INEbase:** [www.ine.es/en/](http://www.ine.es/en/) Twitter: [@es\\_ine](https://twitter.com/es_ine)

All press releases at: [www.ine.es/en/prensa/prensa\\_en.htm](http://www.ine.es/en/prensa/prensa_en.htm)

---

Press Office: Telephone numbers: (+34) 91 583 93 63 /94 08 – [gprensa@ine.es](mailto:gprensa@ine.es)

**Information Area:** Telephone number: (+34) 91 583 91 00 – [www.ine.es/infoine/?L=1](http://www.ine.es/infoine/?L=1)

---