

Spain in figures 1999

Madrid, 1999

Foreword

The National Statistical Institute presents its publication **Spain in Figures 1999**. We seek to offer to all kinds of users an updated vision of Spain and its environment. The publication includes the most significant and latest figures, put forward in the more interesting way.

The main contribution of this new edition is the most recent data about the European Union countries, and the simplification of contents in order to bring the statistical data to the non-specialised general public. Our main concern is that the readers can have a complete idea of the national information in the European context.

We hope for as good an acceptance as in previous years, thus rewarding the enthusiasm and effort that went into the production of this issue of *Spain in Figures*.

M^a Pilar Martín-Guzmán
President of INE



Territory

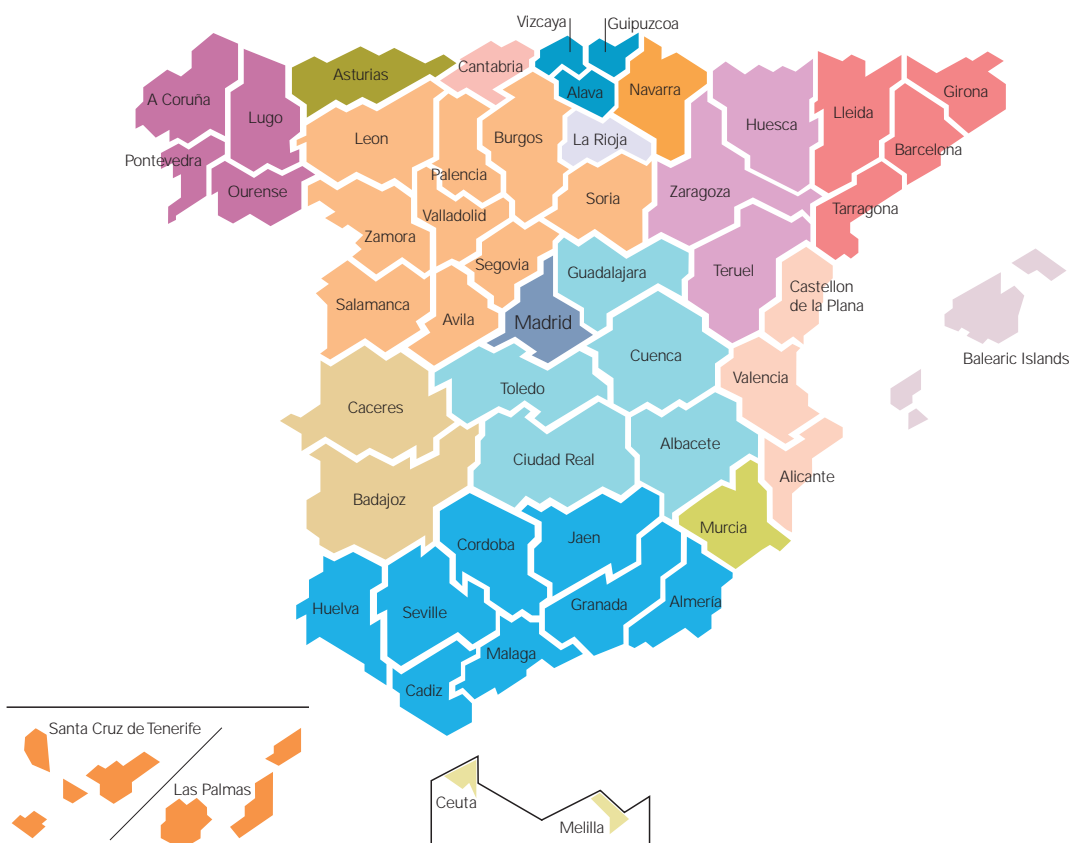
Territory and population of European Union



2

	Surface thousands Km ²	Inhabitants thousands	Inhabitants/ Km ²
UE-15	3.196,0	374.567	117
Germany	356,9	82.060	230
Austria	83,9	8.075	96
Belgium	30,5	10.192	334
Denmark	43,1	5.295	123
Spain	506,0	39.853	78
Finland	337,1	5.147	15
France	544,0	58.723	108
Greece	132,0	10.508	80
Ireland	70,3	3.693	53
Italy	301,3	57.563	191
Luxembourg	2,6	424	163
Netherlands	41,2	15.650	380
Portugal	92,4	9.957	108
U. Kingdom	244,1	59.084	242
Sweden	411,0	8.848	20

Provinces and autonomous communities (km²)



Andalusia	87.595	Castile - La Mancha	79.461	Comm. of Valencia	23.255
Almeria	8.775	Albacete	14.924	Alicante	5.817
Cadiz	7.436	Ciudad Real	19.813	Castellon de la Plana	6.632
Cordoba	13.771	Cuenca	17.140	Valencia	10.806
Granada	12.647	Guadalajara	12.214	Extremadura	41.634
Huelva	10.128	Toledo	15.370	Badajoz	21.766
Jaen	13.496	Castile & Leon	94.224	Caceres	19.868
Malaga	7.306	Avila	8.050	Galicia	29.575
Seville	14.036	Burgos	14.292	Coruña (A)	7.951
Aragon	47.720	Leon	15.581	Lugo	9.856
Huesca	15.636	Palencia	8.052	Ourense	7.273
Teruel	14.810	Salamanca	12.350	Pontevedra	4.495
Zaragoza	17.274	Segovia	6.921	Madrid (Comm. of)	8.028
Asturias (Principaty of)	10.604	Soria	10.306	Murcia (Region de)	11.314
Balearic Islands	4.992	Valladolid	8.111	Navarre (Comm. of)	10.391
Canary Islands	7.492	Zamora	10.561	Basque Country	7.234
Palmas (Las)	4.111	Catalonia	32.113	Alava	3.037
Santa Cruz de Tenerife	3.381	Barcelona	7.728	Guipuzcoa	1.980
Cantabria	5.321	Girona	5.910	Vizcaya	2.217
		Lleida	12.172	Rioja (La)	5.045
		Tarragona	6.303	Ceuta	20
				Melilla	12



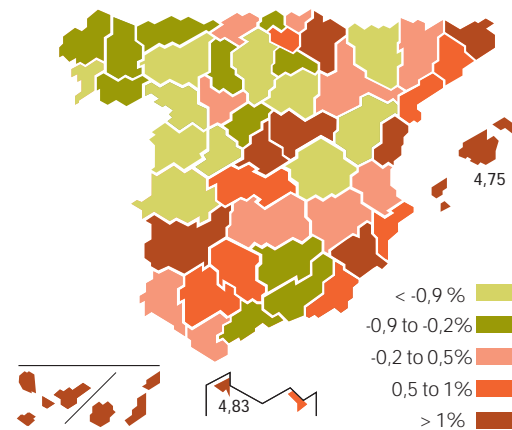
Population

Population. Municipal registers renewed on 1st Jan 1998

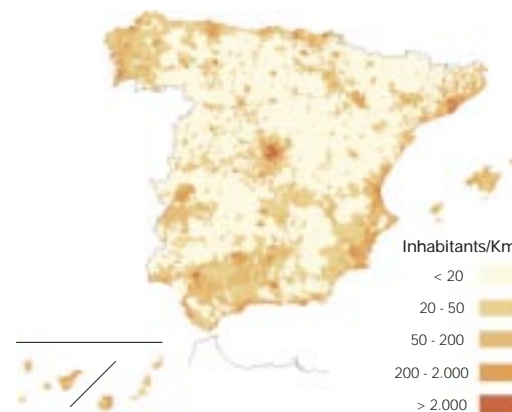
	Total	Men	Women
SPAIN	39.852.651	19.488.465	20.364.186
Andalusia	7.236.459	3.558.950	3.677.509
Almeria	505.448	252.177	253.271
Cadiz	1.107.484	549.120	558.364
Cordoba	767.175	375.244	391.931
Granada	801.177	391.867	409.310
Huelva	453.958	224.433	229.525
Jaen	645.792	319.272	326.520
Malaga	1.240.580	605.927	634.653
Seville	1.714.845	840.910	873.935
Aragon	1.183.234	582.366	600.868
Huesca	204.956	102.854	102.102
Teruel	136.840	68.995	67.845
Zaragoza	841.438	410.517	430.921
Asturias Principalty of	1.081.834	519.530	562.304
Balearic Islands	796.483	392.835	403.648
Canary Islands	1.630.015	808.092	821.923
Palmas (Las)	849.863	425.260	424.603
Santa Cruz de Tenerife	780.152	382.832	397.320
Cantabria	527.137	256.766	270.371
Castile-La Mancha	1.716.152	851.354	864.798
Albacete	358.597	178.058	180.539
Ciudad Real	479.474	234.972	244.502
Cuenca	199.086	99.031	100.055
Guadalajara	159.331	80.464	78.867
Toledo	519.664	258.829	260.835
Castile & León	2.484.603	1.225.516	1.259.087
Ávila	167.132	84.013	83.119
Burgos	346.355	173.195	173.160
León	506.365	247.569	258.796
Palencia	179.623	88.892	90.731
Salamanca	349.550	170.152	179.398
Segovia	146.755	73.410	73.345
Soria	91.593	45.690	45.903
Valladolid	492.029	241.382	250.647
Zamora	205.201	101.213	103.988
Catalonia	6.147.610	2.997.637	3.149.973
Barcelona	4.666.271	2.261.746	2.404.525
Girona	543.191	269.400	273.791
Lleida	357.903	178.152	179.751
Tarragona	580.245	288.339	291.906
Comm. of Valencia	4.023.441	1.970.767	2.052.674
Alicante	1.388.933	682.380	706.553
Castellon de la Plana	461.712	228.231	233.481
Valencia	2.172.796	1.060.156	1.112.640
Extremadura	1.069.419	530.994	538.425
Badajoz	663.803	328.160	335.643
Caceres	405.616	202.834	202.782
Galicia	2.724.544	1.310.415	1.414.129
Coruña (A)	1.106.325	531.769	574.556
Lugo	367.751	179.056	188.695
Ourense	344.170	165.209	178.961
Pontevedra	906.298	434.381	471.917
Madrid (Comm. of)	5.091.336	2.444.919	2.646.417
Murcia Región de)	1.115.068	551.343	563.725
Navarre (Comm. of)	530.819	262.687	268.132
Basque Country	2.098.628	1.026.915	1.071.713
Alava	284.595	141.350	143.245
Guipuzcoa	676.439	331.804	344.635
Vizcaya	1.137.594	553.761	583.833
Rioja (La)	263.644	130.708	132.936
Ceuta	72.117	36.102	36.015
Melilla	60.108	30.569	29.539

Population variation 1998/1996

Spain= 0,46 %



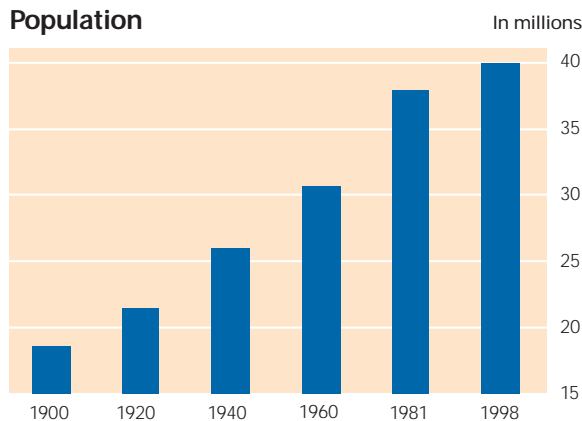
Population density 1998



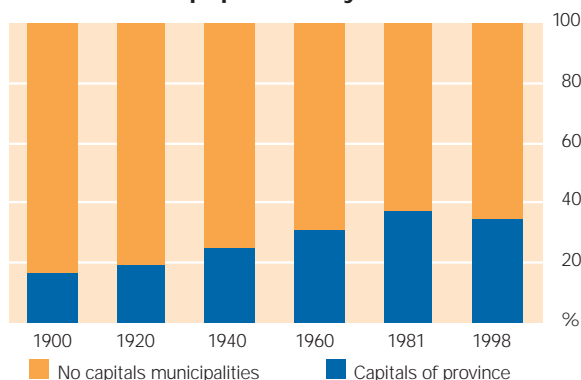
Most populated municipalities 1st Jan 1998

Madrid	2.881.506
Barcelona	1.505.581
Valencia	739.412
Sevilla	701.927
Zaragoza	603.367
Málaga	528.079
Bilbao	358.467
Palmas de Gran Canaria (Las)	352.641
Murcia	349.040
Valladolid	319.946
Palma de Mallorca	319.181
Córdoba	309.961
Vigo	283.110
Alicante/Alacant	272.432
Gijón	265.491
Hospitalet de Llobregat (L')	248.521
Coruña (A)	243.134
Granada	241.471
Vitoria-Gasteiz	216.527
Santa Cruz de Tenerife	211.930
Badalona	209.606
Oviedo	199.549
Móstoles	195.311
Elche/El	191.713
Sabadell	184.859
Santander	184.165
Jerez de la Frontera	181.602
Donostia-San Sebastián	178.229
Cartagena	175.628
Leganes	173.163
Pamplona/Iruña	171.150
Almería	168.025
Fuenlabrada	167.458
Terrassa	165.654
Alcala de Henares	163.831
Burgos	161.984
Salamanca	158.457
Albacete	145.454
Alcorcón	143.970
Getafe	143.629
Cádiz	143.129
Huelva	139.991
León	139.809
Castellón de la Plana/Castello de la Plana	137.741
Badajoz	134.710
San Cristóbal de La Laguna	127.945
Logroño	125.617
Santa Coloma de Gramanet	120.958
Tarragona	112.795
Lleida	112.207

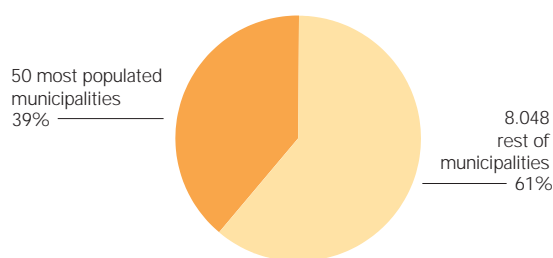
Population



Distribution of population by residence



Distribution of the population. 1998



For further information:

- Population Census 1991
 - General population characteristics
 - Households population characteristics
 - CD-ROM: CERCA, CERCA+100 and CERCA+3500 Municipalities
- Revision of Municipal Register at 01 May 1996
 - Population of Spanish Municipalities
 - Nomenclator of cities, towns, localities, hamlets and other population of entities specified by nuclei (one volume for each province, one diskette for each community and one CD-ROM for Spain)
- Revision of the Municipal Register by 1st of January of 1998
 - Population of Spanish municipalities
 - List of population units 1998

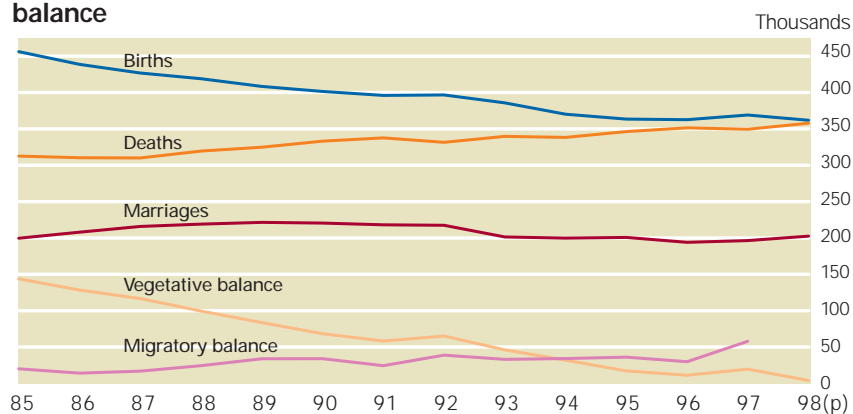
Population

Vital statistics. 1998 (P)

	Absolute figures			Rates per 1,000 inhabitants			
	Marriages	Births	Deaths	Marriages	Births	Deaths	Vegetative growth
SPAIN	202.494	361.930	357.925	5,14	9,19	9,09	0,10
Andalusia	40.022	75.854	60.909	5,57	10,55	8,47	2,08
Aragon	5.973	9.184	12.882	5,08	7,81	10,96	-3,15
Asturias (Princ. of)	4.683	6.429	12.061	4,42	6,06	11,37	-5,31
Balearic Islands	4.380	8.161	7.810	5,94	11,07	10,60	0,48
Canary Islands	7.346	16.966	11.669	4,62	10,67	7,34	3,33
Cantabria	2.686	3.824	5.212	5,10	7,26	9,90	-2,64
Castile & Leon	12.097	17.000	25.334	4,85	6,81	10,15	-3,34
Castile-La Mancha	9.711	15.789	16.384	5,69	9,25	9,60	-0,35
Catalonia	32.046	56.314	56.791	5,29	9,29	9,37	-0,08
Comm. of Valencia	21.412	37.190	37.132	5,45	9,46	9,45	0,01
Extremadura	5.705	9.863	10.185	5,28	9,13	9,43	-0,30
Galicia	12.344	18.310	27.961	4,54	6,74	10,29	-3,55
Madrid (Community of)	23.164	49.034	38.031	4,61	9,75	7,56	2,19
Murcia (Region of)	6.193	12.703	9.151	5,64	11,57	8,34	3,24
Navarra (Comm. of)	2.591	4.953	4.898	4,90	9,36	9,26	0,10
Basque Country	10.079	16.168	18.031	4,91	7,87	8,78	-0,91
Rioja (La)	1.357	2.163	2.549	5,23	8,34	9,82	-1,49
Ceuta	296	969	488	4,08	13,37	6,73	6,63
Melilla	409	1.056	447	6,43	16,59	7,02	9,57

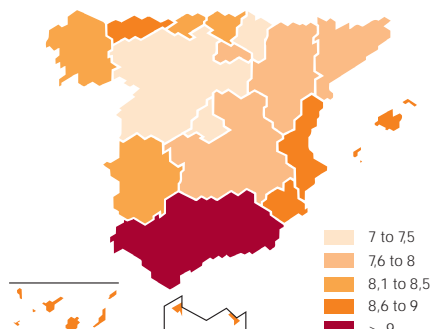
(P) Provisional figures

Trend in births, deaths, marriages, vegetative balance and migratory balance



6

Standardized mortality rates by community of residence. 1996



For further information:

- *Vital statistics. Provisional Data* (annual publishing)
- *Vital statistics. Volume I. National results* (annual publication)
- *Vital statistics. Volume II. Autonomous community results* (Electronic publication)
- **TEMPUS** data bank: over 50,000 annual and monthly series starting in 1946.

Standardised mortality rates are the gross mortality rates of the populations to be compared, based upon a common age structure. **Gross mortality rate** is defined as the ratio between the deaths in one year and the average population for the same period per 1,000 inhabitants.

Average number of children per woman

	1996	1997	1998 (p)
SPAIN	1,17	1,18	1,15
Andalusia	1,32	1,33	1,30
Aragon	1,07	1,08	1,06
Asturias (Princip. of)	0,82	0,82	0,81
Balearic Islands	1,36	1,42	1,43
Canary Islands	1,24	1,25	1,24
Cantabria	0,95	0,96	0,94
Castile & Leon	0,94	0,96	0,91
Castile-La Mancha	1,30	1,29	1,23
Catalonia	1,17	1,22	1,21
Comm. of Valencia	1,17	1,18	1,20
Extremadura	1,28	1,25	1,20
Galicia	0,92	0,92	0,90
Madrid (Comm. of)	1,16	1,19	1,20
Murcia (Region of)	1,42	1,45	1,44
Navarre (Comm. of)	1,16	1,19	1,20
Basque Country	0,96	0,98	0,97
Rioja (La)	1,07	1,11	1,11
Ceuta & Melilla	1,82	1,91	1,87

(p) Provisional data

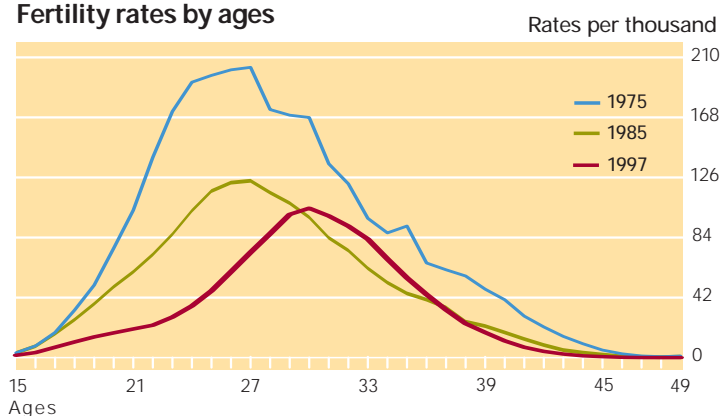


Average number of children per woman

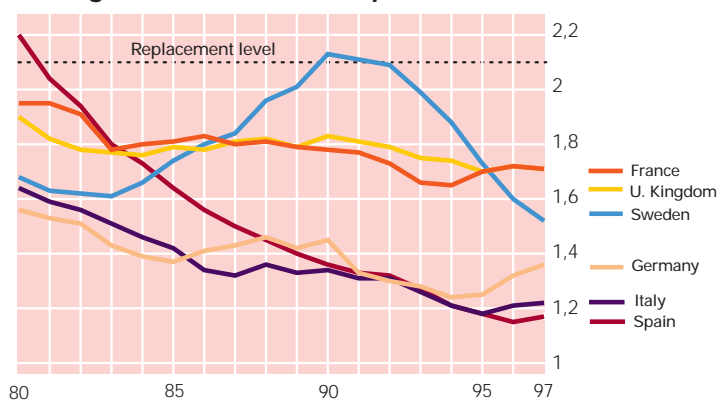
	1996	1997
EUR15	1,44 (e)	1,44 (e)
Germany	1,32	1,36 (e)
Belgium	1,55 (e)	1,55 (e)
Denmark	1,75	1,75 (e)
Spain	1,17	1,18
France	1,72 (p)	1,71 (p)
Greece	1,30	1,32 (e)
Ireland	1,88 (p)	1,92 (p)
Italy	1,21 (e)	1,22 (p)
Luxembourg	1,76	1,71
Netherlands	1,53	1,54 (e)
Portugal	1,43	1,46 (e)
U. Kingdom	1,72 (p)	1,71 (p)
Austria	1,42	1,36
Finland	1,76	1,75
Sweden	1,60	1,52

(p) Provisional figure
(e) Estimated figure

Fertility rates by ages



Average number of children per woman




For further information:

- *Spanish population projections calculated on the basis of the 1991. Population Census.* It consists of a printed volume, containing methodology and commented results and three diskettes containing the populations, calculated by sex and age, at national level (period 1990-2020), at autonomous level (period 1990-2005) and at provincial level (period 1990-2005).
- *Fertility Evolution in Spain 1970-1994.* Consists of a printed volume and an electronic publication. It offers the basic indicators about fertility for the whole country, the autonomous communities and the provinces, as well as an analysis of their recent evolution.
- *Mortality Rates of the Spanish Population 1994-1995.* It contains the most actual results about the biometric functions of the spanish population. *Two volumes: national level and autonomous communities*

Population

Life expectancy at birth. 1994 - 1995

	Men	Women	Difference
SPAIN	74,29	81,57	7,28
Andalusia	73,29	80,49	7,20
Aragon	75,46	81,89	6,43
Asturias (Princip. of)	73,14	81,30	8,16
Balearic Islands	73,48	80,78	7,30
Canary Islands	73,56	81,12	7,56
Cantabria	74,16	82,03	7,87
Castile & Leon	75,94	82,76	6,82
Castile-La Mancha	75,64	81,28	5,64
Catalonia	74,49	81,91	7,42
Comm of Valencia	73,84	80,60	6,76
Extremadura	74,43	81,39	6,96
Galicia	73,86	81,60	7,74
Madrid (Comm. of)	74,82	82,86	8,04
Murcia (Region of)	74,17	80,74	6,57
Navarre (Comm. of)	75,55	82,42	6,87
Basque Country	73,84	82,23	8,39
Rioja (La)	75,11	81,74	6,63
Ceuta & Melilla	72,42	78,11	5,69



Life expectancy at birth. 1996

	M	W	Difference
Germany	73,6	79,9	6,3
Belgium (p)	73,9	80,5	6,6
Denmark	73,1	78,2	5,1
Spain (p)	74,7	81,9	7,2
France (p)	74,1	82,0	7,9
Greece	75,1	80,4	5,3
Ireland (p)	73,3	78,7	5,4
Italy (e)	74,9	81,3	6,4
Luxembourg	73,3	79,9	6,6
Netherlands	74,7	80,3	5,6
Portugal	71,1	78,6	7,5
U. Kingdom	74,3	79,5	5,2
Austria	73,9	80,2	6,3
Finland	73,0	80,5	7,5
Sweden	76,5	81,5	5,0

(p) Provisional figure
(e) Estimated figure

Projected population as of 1-7-2000 Thousands

	Total	Men	Women
Total	39.465,7	19.288,3	20.177,4
0-4	1.930,3	997,1	933,2
5-9	1.940,3	1.001,3	939,0
10-14	2.060,9	1.057,7	1.003,2
15-19	2.531,9	1.296,6	1.235,3
20-24	3.132,8	1.598,6	1.534,2
25-29	3.313,6	1.685,6	1.628,0
30-34	3.232,6	1.636,6	1.596,0
35-39	3.075,4	1.545,1	1.530,2
40-44	2.796,4	1.395,3	1.401,1
45-49	2.473,8	1.230,3	1.243,4
50-54	2.364,8	1.165,7	1.199,1
55-59	2.074,4	1.011,0	1.063,4
60-64	1.896,2	899,2	996,9
65-69	2.037,7	940,7	1.097,0
70-74	1.767,8	778,8	989,0
75-79	1.361,2	556,5	804,6
80-84	828,3	294,8	533,5
85 and more	647,2	197,1	450,2

Projected population pyramids. 1990, 2000 and 2010



The population pyramids show the members of each age and sex groups as compared to the whole population.

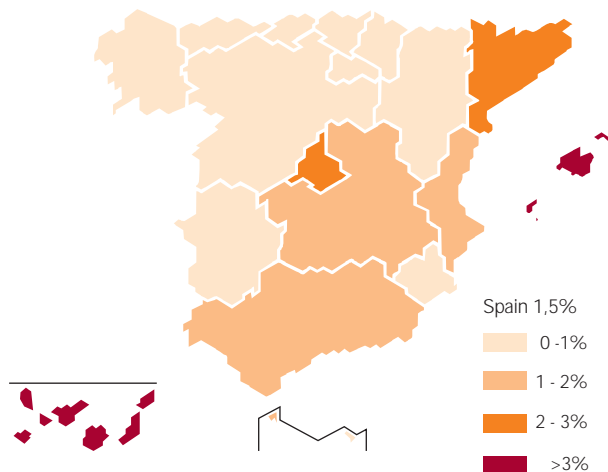
Migrations. 1997

	Internal Migrations Balance	External migrations			External balance	Foreign residents as of 31-12-97
		Spaniards	Foreigners	Total		
SPAIN	0	22.261	35.616	57.877	57.877	609.813
Andalusia	-4.317	2.953	4.014	6.967	2.650	83.943
Aragon	-280	281	168	449	169	9.747
Asturias (Princip. of)	-923	798	305	1.103	180	7.483
Balearic Islands	5.845	294	984	1.278	7.123	32.051
Canary Islands	10.351	1.510	5.404	6.914	17.265	58.890
Cantabria	735	223	81	304	1.039	3.469
Castile & León	-4.172	968	376	1.344	-2.828	17.422
Castile- La Mancha	2.729	307	765	1.072	3.801	9.347
Catalonia	-3.286	2.744	8.288	11.032	7.746	124.550
Comm. of Valencia	7.389	2.142	4.331	6.473	13.862	64.821
Extremadura	-550	240	376	616	66	7.266
Galicia	-2.138	5.028	880	5.908	3.770	19.241
Madrid (Comm. of)	-9.183	3.226	6.863	10.089	906	115.983
Murcia (Region of)	1.390	548	1.182	1.730	3.120	9.643
Navarre (Comm. of)	741	141	333	474	1.215	4.850
Basque Country	-4.290	737	1.089	1.826	-2.464	15.647
Rioja (La)	377	43	154	197	574	2.530
Ceuta	-202	49	14	63	-139	903
Melilla	-216	29	9	38	-178	594
Non classifiables	0	0	0	0	0	21.433

Foreign resident in Spain. December 1998

TOTAL	719.647
EUROPE	330.528
U. Kingdom	74.419
Germany	58.089
Portugal	42.310
France	39.504
Italy	26.514
Netherlands	16.144
Belgium	11.997
Sweden	8.491
Denmark	5.686
Finland	4.303
Austria	3.521
Ireland	3.293
Greece	769
Luxembourg	219
AMERICA	147.200
Peru	24.879
Dominican Republic	24.256
Argentina	17.007
USA	15.563
Cuba	13.214
ASIA	60.714
China	20.690
Philippines	13.553
AFRICA	179.487
Morocco	140.896
OCEANIA	1.023
Stateless and unknown	695

Foreign residents as a percentage of total resident population



For further information:

- *Migrations* (annual publication)
 - *Labour Force Survey. Migrations* (annual publication)
 - **TEMPUS** data bank: over 30.000 series.
- Other sources
- The data about foreigners residing in Spain are taken from the Foreign Residents Register maintained by the general Directorate of Police.



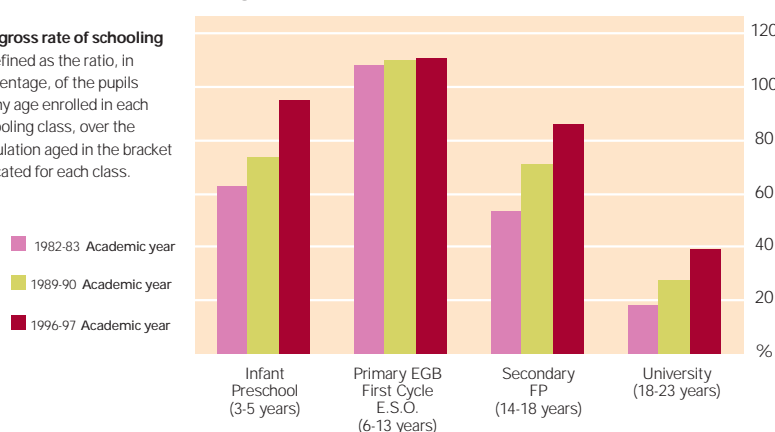
Education

Teachers and pupils. Academic year 1996-97

	Enrolled pupils			Teachers		
	Total	Public	Private	Total	Public	Private
Infantile. education	1.115.244	754.196	361.048	158.849	120.165	38.684
Primary education/EGB	3.137.278	2.071.095	1.066.183	4.259	2.297	1.962
Special education	28.588	13.746	14.842			
Secondary ed. & profes. ed.	3.159.330	2.324.933	834.397	179.560	141.462	38.098
Secondary general	2.491.807	1.859.791	632.016	-	-	-
Professional formation (Secondary education)	667.523	465.142	202.381	-	-	-
Not distributed in previous levels	0	0	0	143.298	95.009	48.289
Other secondary education	426.779	397.684	29.095	16.889	13.837	3.052
University	1.597.242	1.444.276	152.966	86.362	76.179	10.183
First cycle studies	532.242	462.118	70.124	18.180	14.926	3.254
First and second studies cycle	1.004.167	923.637	80.530	68.182	61.253	6.929
Third cycle studies (Doctorate)	60.833	58.521	2.312	-	-	-
Other high level education	85.344	61.219	24.125	2.580	1.245	1.335

Gross rate of schooling per educational class

The **gross rate of schooling** is defined as the ratio, in percentage, of the pupils of any age enrolled in each schooling class, over the population aged in the bracket indicated for each class.



For further information:

- *Higher Education Statistics in Spain* (annual publication)

Other sources:

- The data on primary and secondary education were obtained from the Ministry of Education and Culture



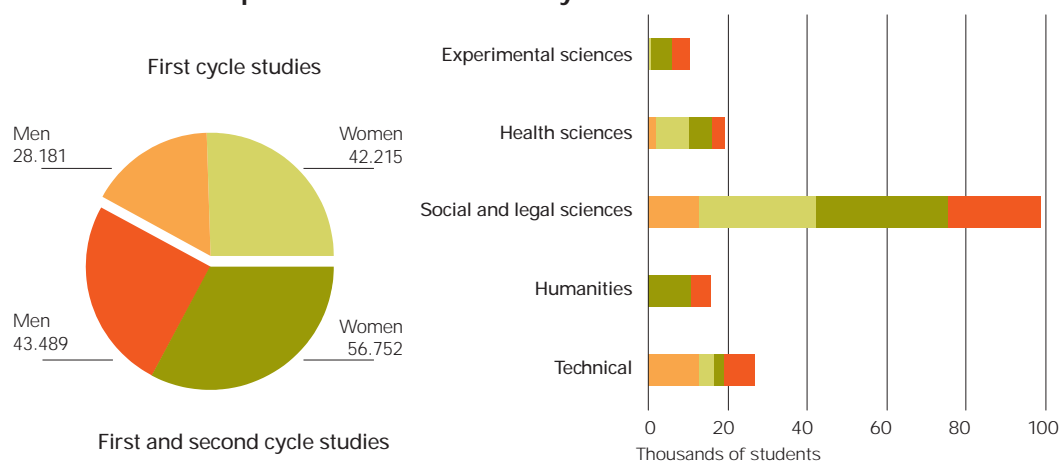
Percentage of 25-29 years-old population that at least has completed the high secondary education

UE-15	58
Germany	80
Austria	73
Belgium	60
Denmark	79
Spain	34
Finland	71
France	62
Greece	48
Irlanda	52
Italy	40
Luxembourg	47
Netherland	65
Portugal	24
U. Kingdom	53
Sweden	76

University Education Institutions. Academic year 1996-97

	Total	State universities			Private universities	
		Total	Institution's ownership			
			University	Other public entities		Private
UNIVERSITY SCHOOLS						
Number of Centres	361	344	208	61	75	17
Teaching staff	18.180	17.666	12.912	2.014	2.740	514
-Women	7.076	6.878	4.752	907	1.219	198
Enrolled students	532.242	513.875	428.081	34.037	51.757	18.367
-Women	270.079	260.332	207.676	20.525	32.131	9.747
Completed studies (year 95-96)	70.396	67.415	53.899	4.721	8.795	2.981
-Women	42.215	40.394	30.966	3.183	6.245	1.821
FACULTIES & HIGHERTECHNICAL COLLEGES						
Degrees studies						
Number of Centres	441	383	354	11	18	58
Teaching staff	57.253	52.392	50.023	863	1.506	4.861
-Women	19.201	17.516	16.741	294	481	1.685
Enrolled students	862.436	820.040	779.660	13.319	27.061	42.396
-Women	504.026	479.148	459.416	5.802	13.930	24.878
Completed studies (year 95-96)	90.324	85.108	80.070	1.543	3.495	5.216
-Women	54.263	51.332	48.748	665	1.919	2.931
Architecture and Engineering studies						
Number of centres	84	75	75	0	-	9
Teaching staff	10.929	10.367	10.367	0	-	562
-Women	1.869	1.739	1.739	0	-	130
Enrolled students	141.731	131.493	130.658	0	835	10.238
-Women	38.961	36.423	36.047	0	376	2.538
Completed studies (year 95-96)	9.917	8.904	8.904	0	-	1.013
-Women	2.489	2.162	2.162	0	-	327

Students who completed studies. Academic year 1995-96





Health

Hospital morbidity. 1996

Diagnosis	Scheduled admissions	Urgent admissions	Patients discharged per 100,000 inhab.	Average stay per patient	Average patient age
Digestive system	261.192	222.249	1.231	8	50
Respiratory system	174.111	203.109	961	8	45
Circulatory system	203.045	262.302	1.185	11	65
Malignant tumors	148.688	82.272	588	14	61
Musculoskeletal system and connective-tissue system diseases	172.584	53.535	576	9	51
Fractures	48.720	93.152	361	11	48

Number of deaths by major causes of death. 1996

Causes	Deaths			Mortality per 1,000 deaths	Mortality per 100,000 inhabitants
	Total	Men	Women		
Circulatory system	133.499	60.675	72.824	379,85	339,95
Tumors	89.204	55.416	33.788	253,82	227,15
Respiratory system	34.718	21.369	13.349	98,79	88,41
Digestive system	18.861	10.529	8.332	53,67	48,03
Immune system disorder	5.504	4.409	1.095	15,66	14,02
AIDS	5.432	4.355	1.077	15,45	13,84
External causes of traumatism and poisoning	16.324	11.730	4.594	46,45	41,57
Traffic accidents (of motor vehicles)	5.635	4.276	1.359	16,03	14,35

Members of the medical personnel. 1998

Professionals	Total
Physicians	171.494
Odontologists & stomatologists	16.133
Pharmacists	46.761
Veterinarians	20.833
Qualified in nursing	203.504

12

For further information:

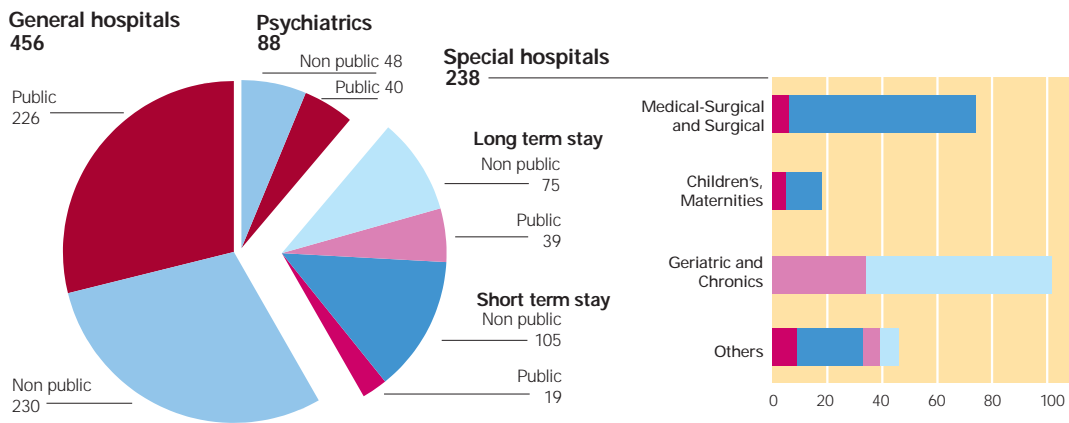
- *Hospital Morbidity Survey* (annual publication).
- *Deaths by Cause of Death*. Volume I. Basic Results (annual publication).
- *Deaths by Cause of Death*. Volume II. Results by Autonomous Communities (electronic publication).
- **TEMPUS** data bank: over 60.000 series about deaths since 1980.
- *In-patient Health-care Establishments Statistics* (annual publication)
- *Hospital Indicator Statistics* (annual publication)
- *Monthly Statistics Bulletin* (monthly publication)
- *Spanish Statistical Yearbook* (annual publication)
- Anonymous micro-data files.

	Hospital beds per 10,000 inhabitants 1995	Physicians per 10,000 inhabitants 1996
Germany	74,7	34,1
Austria	93,1	33,9
Belgium	57,5	37,8
Denmark	50,4	29,1
Spain	40,3	42,2
Finland	92,8	28,5
France	90,6	28,2
Greece	49,8	39,3
Ireland	-	21,1
Italy	61,8	57,0
Luxembourg	115,8	22,8
Netherland	113,1	-
Portugal	40,9	30,1
U. Kingdom	-	17,5
Sweden	61,0	-

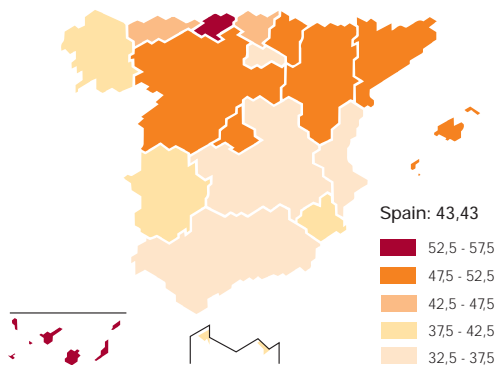
Hospitals by purpose. 1995

	Total	General	Special short term stay	Special long term stay	Psychiatrics
Hospitals	782	456	124	114	88
Beds in use per 1.000 inhabitants	3,94	2,91	0,24	0,29	0,51
Discharged patients per 1.000 inhabitants	108,82	97,73	8,93	1,36	0,78
Occupancy rate	79,05	77,28	65,48	89,59	89,52
Average stay per patient	10,46	8,4	6,3	69,07	211,94
Yearly patient rotation	27,59	33,57	37,96	4,73	1,54
Index per bed in use					
Total of personnel	2,22	2,64	1,94	1,01	0,58
Health personnel	1,52	1,84	1,27	0,62	0,36

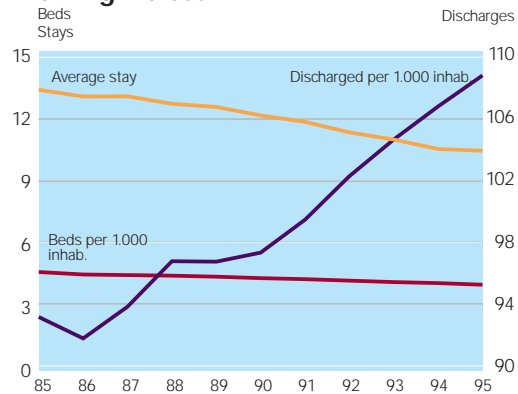
Hospitals



Installed beds per 10,000 inhabitants.



Working indices





Culture and leisure

Publishing production. 1998 Books and booklets

Subjects	Titles	Copies (Thousands)	Average edition (Thousands)
TOTAL	55.774	236.810	
Generalities	1.381	5.786	
Philosophy, psychology	2.314	6.775	
Religion, theology	2.032	10.877	
Sociology, statistics	1.184	1.543	
Political sciences, political economy	1.587	3.783	
Law, public administration, social provision and care, insurance	3.591	7.493	
Military art and science	76	127	
Teaching, education	2.200	6.354	
Commerce, communications, transport	373	826	
Ethnography, customs, folklore	873	1.611	
Mathematics	1.066	5.346	
Natural sciences	2.252	8.066	
Medical sciences, public health	2.580	9.273	
Engineering, technology, industries and miscellaneous trades	3.129	9.438	
Agriculture, forestry, stockbreeding, hunting, fishing	842	2.330	
Domestic economy	578	4.482	
Industry, commerce and communications management and organisation	1.223	3.277	
Town planning, architecture	717	1.378	
Plastic arts, arts, photography	2.155	6.845	
Music, performing art, radio, television	1.111	4.249	
Games, sports	734	2.363	
Linguistics, philology	2.164	15.450	
Literature	16.455	101.294	
Geography, travel	1.876	7.760	
History, biography	3.281	10.084	

Libraries. 1996

Number of libraries	6.664
Number of points of service	8.047
Registered borrowers	11.535.359
Book funds	93.866.412
Periodical bound publications (volumes)	6.456.392
Video-graphic material (units)	8.459.931
Personnel at library service	20.408
Expenses of the libraries (thousands ptas.)	68.381.069

For further information:

- *Book publishing statistics* (two year publication).
- *Publishing Production Statistics* (annual publication).
- *Monthly Statistical Bulletin* (monthly publication).
- **TEMPUS** data bank: over 1,000 series about publishing production.

	TV consumption Daily minutes 1998	Newspaper circulation per 100 inhabitants
Germany	200	42,9
Austria	142	32,8
Belgium	169	16,9
Denmark	164	19,3
Spain	209	11,2
Finland	158	41,1
France	203	15,4
Greece	187	6,7
Ireland	200	19,6
Italy	233	10,1
Netherlands	155	29,5
Portugal	174	4,4
U. Kingdom	205	32,7
Sweden	141	43,2

Average audience¹ of the Media. 1998

	Papers	Magazines	Radio	Television	Cinema	Internet
Over total population ²	36,9	53,2	53,5	89,4	10,2	4,6
Men	47,7	48,4	58,5	89,2	10,4	6,5
Women	26,6	57,8	48,8	89,6	10,0	2,8
On total of media	100,0	100,0	100,0	100,0	100,0	100,0
Men	63,0	44,3	53,2	48,6	49,5	68,8
Women	37,0	55,7	46,8	51,4	50,5	31,2

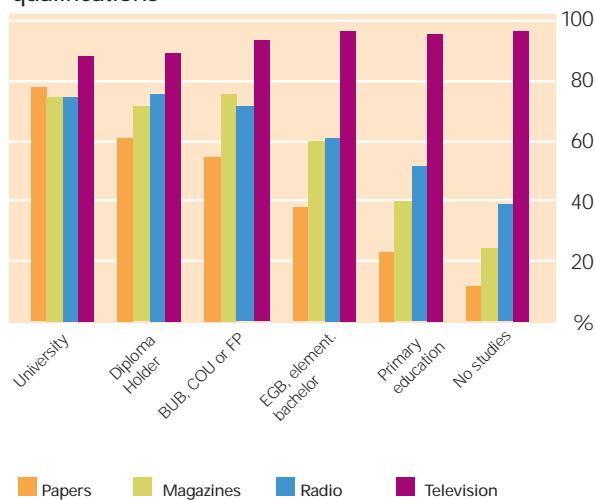
¹ Readers, listeners and viewers
² Only aged 14 or more

Cinema activities. 1997

Cinemas which had shows	2.565
Films shown (titles)	1.567
Spectators (millions)	
Total	105,0
Of Spanish films	13,7
Of foreign films	91,3
Box office (millions ptas.)	
Total	58.702
For Spanish films	7.645
For foreign films	51.057
Average cinema-going per inhabitant & year	3
Average expenditure (pesetas)	
Per spectator	559,0
Per inhabitant	1.481,6

Mass Media audience. 1996

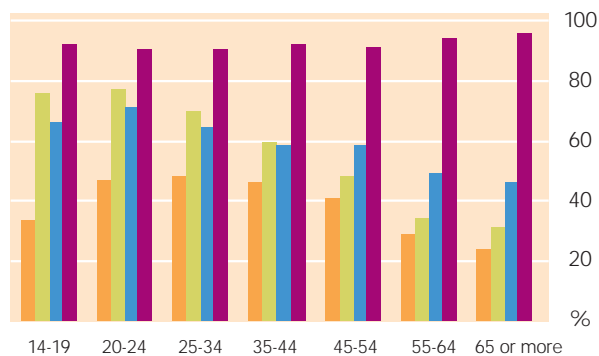
Percentage over total population with following qualifications



Other sources:

- Data about cinemas activities have been obtained from the Subdirección General of the Department of Showings of the Institute of Cinematography and Audio-Visual Arts (ICAA), of the Ministry of Education and Culture.
- Data about the audience of the Media come from the Association for Investigation of the Media (AIMC - General studies of the Media) and from the Foundation for the Development of the Social Function of Communications (FUNDESCO).

Percentage over total population by age group





Justice

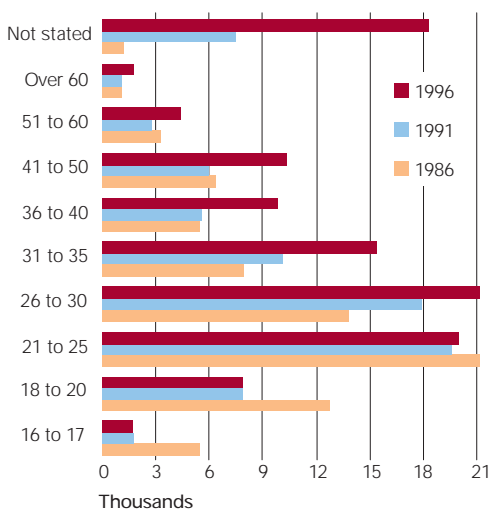
Offences, by nature and sentences passed. 1996

Provincial Courts and Criminal Courts

	Total	12 to 30 years imprisonment	6 to 12 years imprisonment	6 month to 6 years imprisonment	1 to 6 months imprisonment	1 to 230 days imprisonment	Banishment or loss of nationality	Barring or suspension from public office	Fine	Loss of driving license	Not stated
Total	110.844	88	205	1.410	28.957	31.266	1.1571	99	46.130	609	922
Against exterior State security	38	-	-	-	32	6	-	-	-	-	-
Against interior State security	3.771	-	-	6	1.635	1.740	15	13	358	1	3
Falsehood	2.633	-	-	3	1.208	965	3	2	449	-	3
Against the Administration of justice	4.006	-	-	-	108	3.302	26	1	564	-	5
Offences involving recklessness in general	31.208	1	3	450	4.949	1.919	34	2	23.372	457	21
Committed by civil servants in office	341	-	4	1	151	59	1	40	76	7	2
Against persons	3.853	18	56	101	1.575	1.329	54	-	696	2	22
Sexual offences	931	2	62	28	473	132	3	1	229	-	1
Against honor	31	-	-	-	-	10	-	-	21	-	-
Against marital status of persons	13	-	-	-	10	2	-	-	1	-	-
Against liberty and security	2.548	1	3	2	223	1.602	449	6	217	-	45
Against property	49.642	25	7	170	13.111	16.897	502	10	18.749	87	84
Negligence	1.007	-	-	-	291	409	7	-	277	22	1
Special laws	1.083	-	-	-	656	321	2	21	76	4	3
Cumulated offences	8.139	41	70	648	4.272	2.344	561	1	674	16	16
Not stated	1.600	-	-	1	263	229	5	2	371	13	716

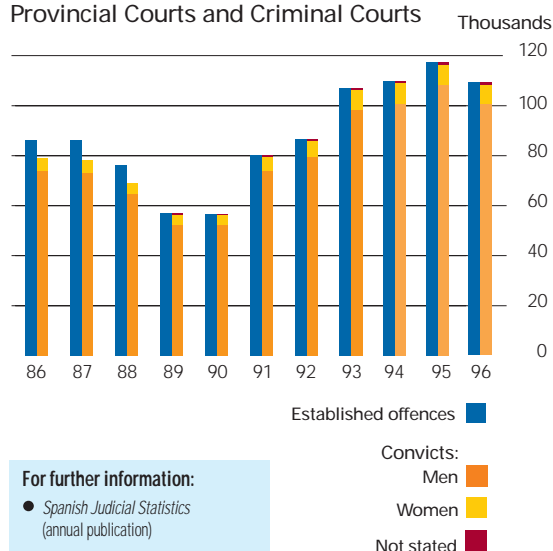
Convicts per age

Provincial Courts and Criminal Courts



Established offences and convicts

Provincial Courts and Criminal Courts



For further information:

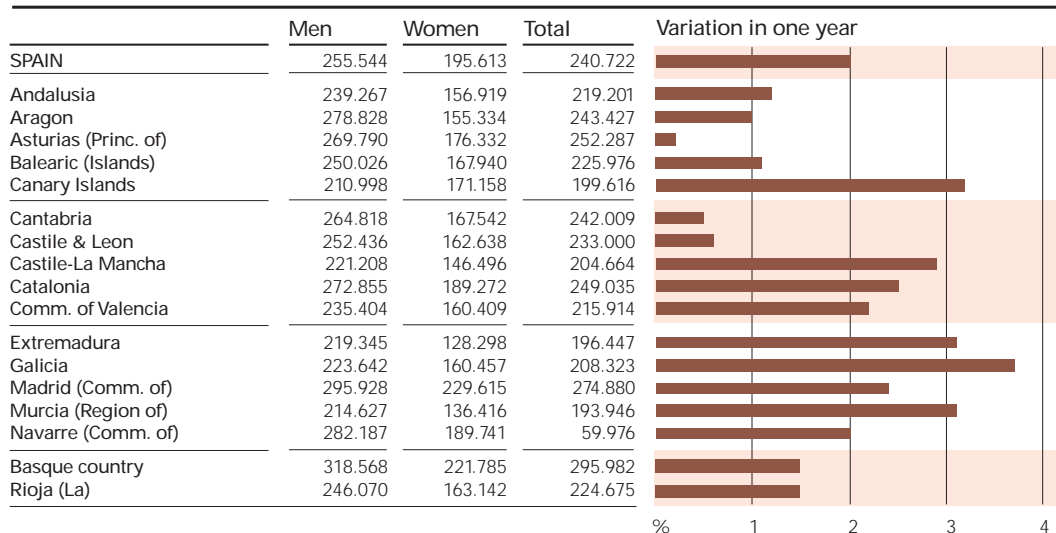
• Spanish Judicial Statistics (annual publication)



Labour market

Average monthly earnings per worker in industry and services. 4th quarter 1998

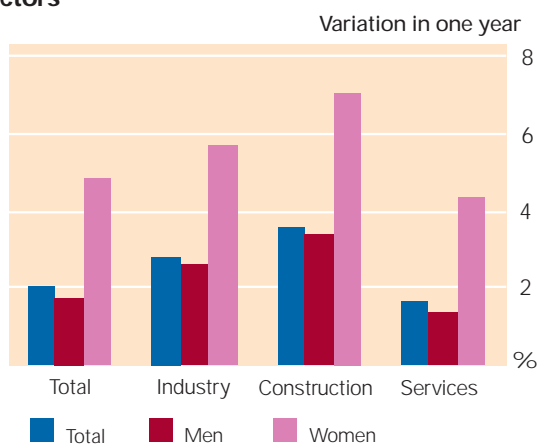
Total pay including overtime (pesetas)



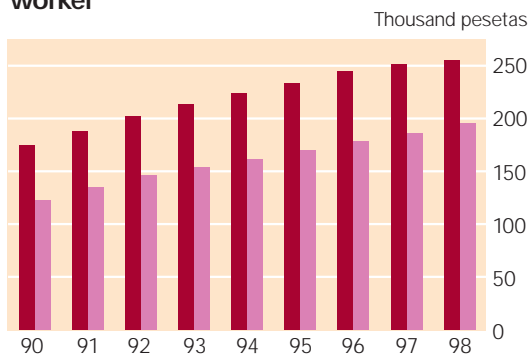
Average monthly earning per worker per sectors

Total pay including overtime (pesetas)

	Men	Women	Ratio Women/Men
TOTAL	255.544	195.613	76,5
Employees	342.026	227.402	66,5
Workers	198.637	143.991	72,5
INDUSTRY	276.771	202.459	73,2
Employees	396.999	260.223	65,5
Workers	230.234	160.469	69,7
CONSTRUCTION	206.817	193.945	93,8
Employees	318.648	199.759	62,7
Workers	181.998	143.971	79,1
SERVICES	255.557	191.567	75,0
Employees	322.307	220.525	68,4
Workers	168.753	126.877	75,2



Evolution of average monthly earning per worker



For further information:

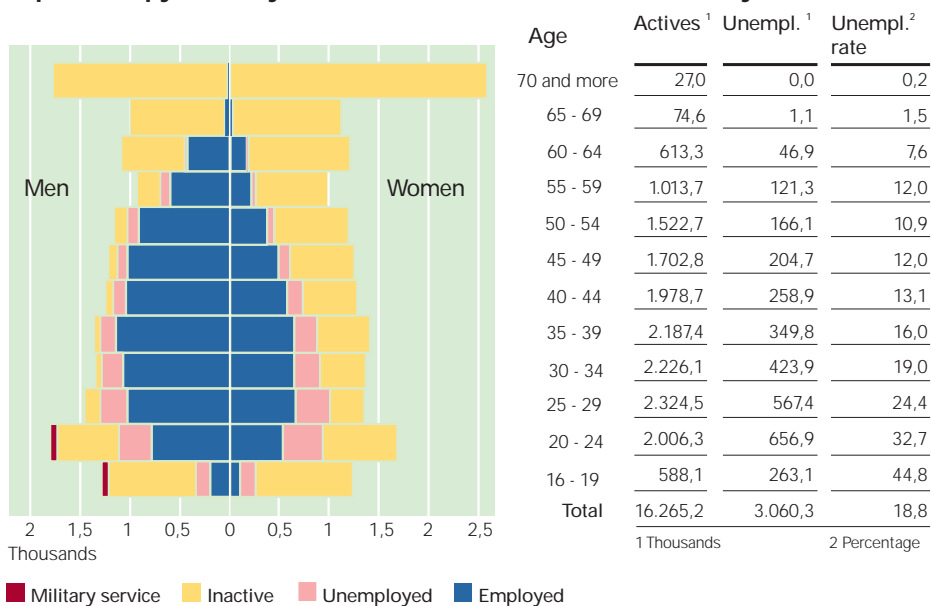
- *INE figures. Industry and Services Wages Survey* (quarterly publication)
- *Industry and Services Wages Survey* (quarterly and annual electronic publication)
- *Monthly Statistical Bulletin* (monthly publication)
- *Quarterly Bulletin on the Economic Situation* (quarterly publication)
- **TEMPUS** data bank: over 5.800 series.

Labour market

Labour Force Survey (LFS). 1998

	Active population. Thousands						Unem- ployed	Activity rate	Unemploy- ment rate
	Total	Employed				Services			
		Total	Agricul- ture	Industry	Cons- truction				
SPAIN	16.265,2	13.204,9	1.060,6	2.708,0	1.307,1	8.129,3	3.060,3	49,99	18,82
Andalusia	2.779,4	1.961,0	252,0	256,2	201,9	1.250,9	818,5	48,70	29,45
Aragon	487,7	432,3	42,8	109,8	31,4	248,3	55,5	48,97	11,37
Asturias (Princ. of)	389,4	315,2	33,4	63,1	37,5	181,1	74,3	42,42	19,07
Balearic (Islands)	323,3	287,4	7,1	32,5	33,8	214,0	35,9	54,12	11,12
Canary Islands	667,3	542,0	37,0	41,8	64,7	398,5	125,3	52,28	18,78
Cantabria	210,2	171,9	17,6	36,1	19,9	98,2	38,3	47,36	18,22
Castile & León	988,7	810,5	100,1	153,4	83,3	473,7	178,2	46,83	18,04
Castile-La Mancha	655,8	543,9	69,4	105,3	78,3	290,8	111,9	47,31	17,06
Catalonia	2.701,0	2.312,7	79,9	670,5	215,4	1.346,9	388,3	53,06	14,38
Comm. of Valencia	1.653,3	1.375,8	78,6	359,3	128,3	809,6	277,5	50,90	16,79
Extremadura	408,8	290,3	46,5	29,2	38,5	176,2	118,5	47,04	28,98
Galicia	1.110,5	917,9	181,7	162,5	98,1	475,5	192,6	48,03	17,34
Madrid (Comm. of)	2.179,7	1.811,0	18,9	318,4	150,6	1.323,0	368,7	52,13	16,92
Murcia (Region of)	446,5	369,0	48,7	66,4	36,8	217,0	77,5	51,16	17,35
Navarre (Comm.of)	226,6	203,9	19,6	62,3	16,1	105,9	22,7	51,08	10,03
Basque country	882,9	730,8	17,9	210,8	61,3	440,8	152,1	50,20	17,23
Rioja (La)	100,1	88,9	9,0	28,4	8,7	42,9	11,2	45,81	11,18
Ceuta & Melilla	53,8	40,4	0,2	1,7	2,5	36,0	13,4	52,40	24,85

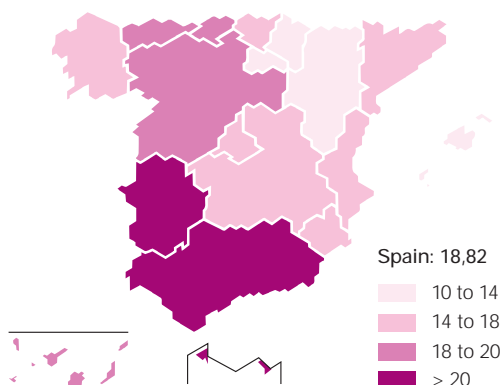
Population pyramid by its relation with the economic activity



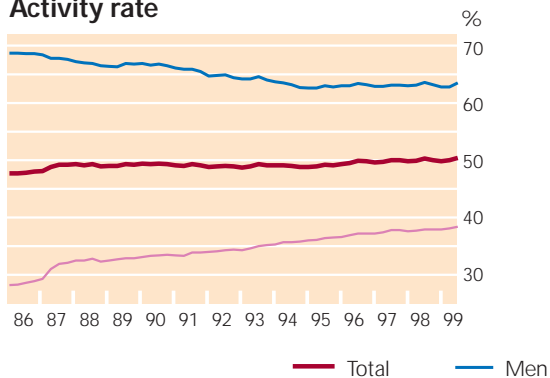
Employed by professional situation Thousands

TOTAL	13.204,9
Self-employed	3.026,2
Employer	692,3
Businessman without employees or independent worker	1.876,2
Member of a cooperative	82,4
Family help	375,3
Wage earner	10.156,6
Wage earner public sector	2.225,1
Wage earner private sector	7.931,5
Other situation	22,1

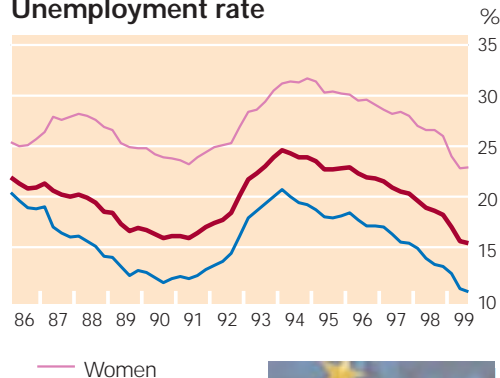
Unemployment rate



Activity rate



Unemployment rate



Unemployment rate

	1997	1998
UE-15	10,8	10,2
Germany	9,9	9,8
Austria	5,1	5,5
Belgium	9,0	9,3
Denmark	5,4	5,0
Spain	20,9	18,9
Finland	15,0	13,2
France	12,6	12,1
Greece	9,6	10,8
Ireland	10,2	-
Italy	12,4	12,4
Luxembourg	2,5	2,8
Netherlands	5,5	4,4
Portugal	6,6	4,7
U. Kingdom	7,1	6,2
Sweden	10,4	8,9

Source: Labour Force Survey (LFS)
EUROSTAT

Terms used:

Employed: anyone aged 16 or more who was working against retribution during the reference week; or who had a job and was temporarily absent on sick leave, holidays, etc...

Unemployed: anyone aged 16 or more who had no job, was available and was looking for work during the reference week.

Population counted separately: anyone doing military or substitute community service.

Inactive: anyone aged 16 or more not included in the categories mentioned above.

For further information

- *INE figures, Labour force survey* (Quarterly publication)
- *Labour force survey. Principal results* (Quarterly publication)
- *Labour force survey. Detailed results* (Quarterly publication)
- *Labour force survey. Annual tables* (Annual publication)
- *Labour force survey. Migrations* (Annual publication)
- *Labour force survey. Flow statistics* (Biennial publication)
- Anonymous microdata files
- **TEMPUS** Data bank : over 30,000 series since 1964



Life conditions

Consumer price index (CPI). Annual average 1998

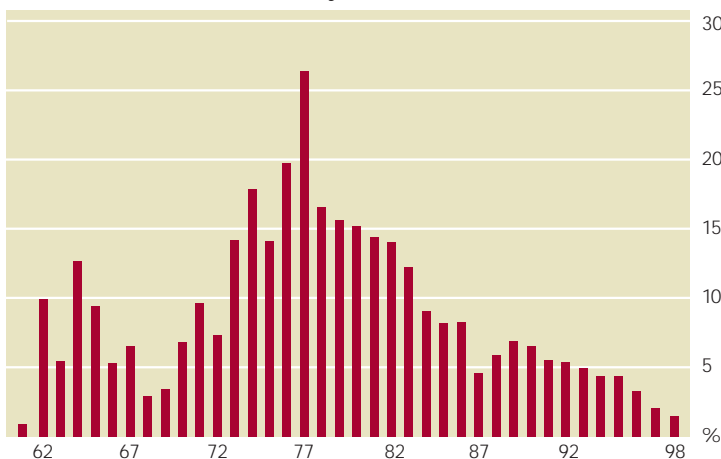
General index and by groups

	Basic Index 1992	Variation in one year
GENERAL INDEX	123,8	1,8
1. Food	120,7	1,7
2. Clothing	117,2	2,1
3. Housing	129,1	1,5
4. Household	118,6	1,7
5. Medicine	125,5	3,3
6. Transports	127,1	0,4
7. Culture	122,2	1,8
8. Others	130,1	3,6

Special groups indices

	Basic index 1992	Variation in one year
Food	120,7	1,7
- Processed	123,3	1,3
- Non-processed	116,9	2,1
Industrial goods, among them:	119,1	0,5
- Consumer goods	120,5	0,9
- Energy products	117,8	-3,8
- Fuels	121,3	-4,2
GENERAL INDEX		
Food excluded	125,1	1,9
Energy products excluded	124,3	2,3
Non-processed food and energy products excluded	125,3	2,3

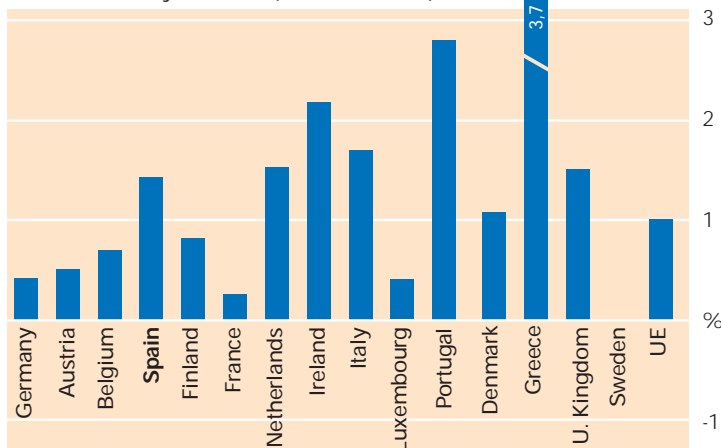
CPI. General index. Annually variation (in December)



For further information:

- INE figures. Consumer price index. Provisional data (monthly publication).
- Consumer price index. 1992. Base period. Methodology.
- Consumer price index. Linked series. 1992 base period.
- Monthly Statistical Bulletin (monthly publication).
- TEMPUS data bank: over 34,000 series CPI series.

HCPI. Annually variation (December 1998)



Harmonized consumer price index (HCPI)
Annually variation

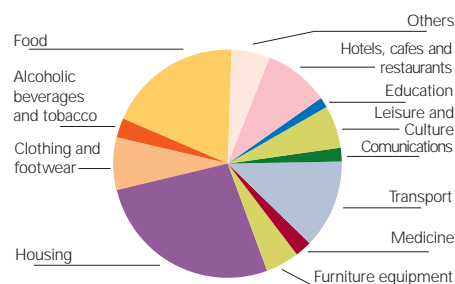
	Dec.97 to Dec. 98	Dec.98 to Dec.97	Jul.99 to Jul.98
UE (p)	1,6	1,0	1,1
Germany	1,4	0,4	0,6
Austria (p)	1,0	0,5	0,3
Belgium	0,9	0,7	0,7
Denmark	1,7	1,1	2,0
Spain	1,9	1,4	2,1
Finland	1,6	0,8	1,4
France	1,2	0,3	0,4
Greece	4,5	3,7	1,8
Ireland	1,0	2,2	1,9
Italy	1,8	1,7	1,7
Luxembourg	1,5	0,4	-0,3
Netherlands	2,2	1,5	1,8
Portugal	2,1	2,8	1,9
U. Kingdom	1,8	1,5	1,3
Sweden	2,7	0,0	0,2

(p) Provisional data

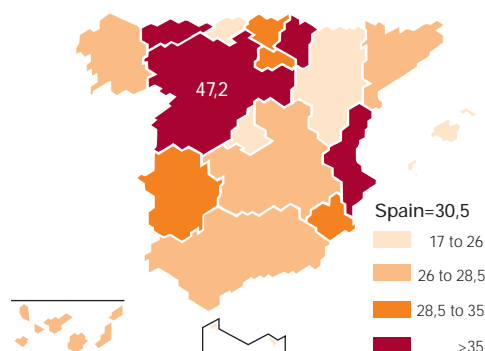
Annual household expenditure. 1998

Group of items of expenditure	Total expenditures (million pesetas)	Average expenditure (thousands pesetas)	
		Per household	Per capita
TOTAL	35.129.775	2.907,4	898,3
Food and non-alcoholic beverages	6.761.874	559,9	173,0
Alcoholic beverages and tobacco	953.057	78,9	24,4
Clothing and footwear	2.558.394	211,8	65,5
Housing	9.458.017	783,1	242,0
Furniture equipment	1.710.673	141,7	43,8
Medicine	848.426	70,3	21,7
Transport	4.355.472	360,8	111,4
Communications	680.614	56,4	17,4
Leisure and Culture	2.156.194	178,5	55,2
Education	531.432	44,0	13,6
Hotels cafes and restaurants	3.281.461	271,7	84,0
Others	1.834.160	151,9	46,9

Percentage breakdown of household expenditure



Percentage of households that can dedicate some money for saving according to their level of incomes and expenditures. 1st quarter 1999



For further information:

- Household Budget Survey. Methodology
- Household Budget Continuous Survey. Base 1997
- Household Budget Continuous Survey. Definitive results. 1998

Annual household expenditure

	Average expenditure per household (thousands pesetas)	Average expenditure per capita (thousands pesetas)	Index on the average of the average expenditure per capita
SPAIN	2.907,4	898,3	100
Andalusia	2.629,0	754,9	84
Aragon	2.836,2	955,0	106
Asturias (Princ. of)	2.896,5	945,2	105
Balearic (Islands)	2.886,6	1.000,0	111
Canary Islands	2.864,9	835,1	93
Cantabria	2.906,0	876,2	97
Castilla & León	2.601,9	854,4	95
Castilla-La Mancha	2.440,3	754,1	84
Catalonia	3.134,7	1.016,8	113
Comm. of Valencia	2.599,9	850,9	95
Extremadura	2.240,3	685,6	76
Galicia	2.695,1	796,2	89
Madrid (Comm. of)	3.782,0	1.148,3	128
Murcia (Region of)	2.558,9	741,5	83
Navarre (Comm. of)	3.820,9	1.155,2	128
Basque Country	3.048,1	925,3	103
Rioja (La)	2.933,6	919,8	102
Ceuta & Melilla	3.416,8	918,4	102

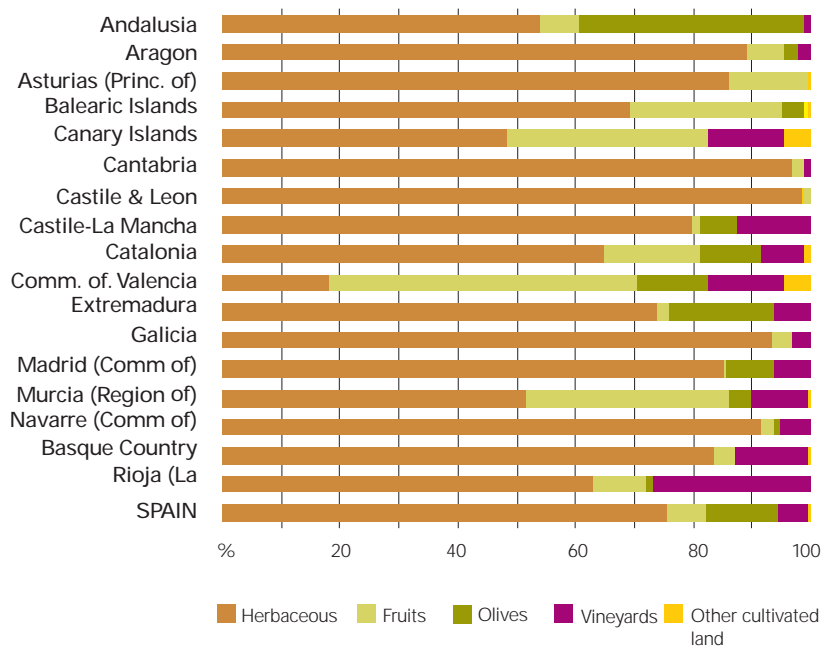


Agriculture

Farms with land. 1997

	Total land		Utilised agricultural area (UAA)				Other land		
	Farms	Hectares	Hectares	Cultivated land		Permanent grazing land		Farms	Hectares
				Farms	Hectares	Farms	Hectares		
SPAIN	1.202.153	33.824.847	25.630.129	1.135.821	17060.029	327.473	8.570.100	487.659	8.194.719
Andalusia	273.233	5.853.953	4.911.022	266.135	3.586.209	24.249	1.324.813	67.122	942.931
Aragon	60.076	3.339.223	2.537.580	56.885	1.792.830	7.217	744.750	24.970	801.642
Asturias (Princ. of)	39.922	667.180	401.310	35.181	30.511	39.616	370.799	30.380	265.871
Balearic (Islands)	17.362	353.696	234.487	17.010	202.430	2.982	32.057	11.508	119.209
Canary Islands	15.039	119.572	49.929	14.529	34.711	3.194	15.218	10.458	69.643
Cantabria	16.378	354.064	229.320	11.066	8.589	16.216	220.731	5.084	124.744
Castile & León	115.401	7.071.672	5.333.467	99.255	3.592.905	45.088	1.740.562	44.562	1.738.205
Castile-La Mancha	132.262	6.310.245	4.716.074	125.559	3.788.887	13.615	927.187	34.634	1.594.172
Catalonia	68.615	1.869.204	1.140.480	66.672	877.297	4.771	263.183	35.604	728.724
Comm. of Valencia	165.089	1.000.360	700.799	164.044	594.721	6.835	106.078	54.506	299.561
Extremadura	67.723	3.097.726	2.885.302	59.185	1.023.601	27.427	1.861.701	16.486	212.424
Galicia	114.781	1.071.421	621.553	112.288	268.302	105.429	353.251	109.822	449.869
Madrid (Comm of)	10.326	397.194	319.235	8.130	205.326	3.099	113.909	2.810	77.959
Murcia (Región of)	47.386	697.250	511.253	47.147	474.979	975	36.274	12.632	185.998
Navarre (Comm. of)	23.050	877.142	579.241	20.930	358.779	6.204	220.462	8.904	297.900
Basque country	22.686	412.515	238.780	19.514	81.933	19.222	156.847	13.307	173.734
Rioja (La)	12.826	332.431	220.299	12.291	138.020	1.333	82.279	4.870	112.131

Use of cultivated land



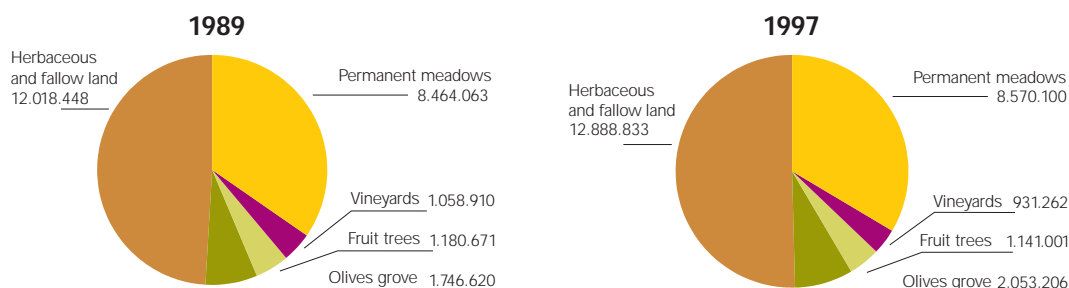
% of the UAA of the farms of 100 Ha or more

UE-15	39,7
Germany	40,7
Austria	24,0
Belgium	10,2
Denmark	40,7
Spain	52,3
Finland	5,1
France	39,5
Greece	3,6
Ireland	15,0
Italy	21,0
Luxembourg	21,8
Netherlands	8,0
Portugal	46,5
U. Kingdonm	66,1
Sweden	31,3

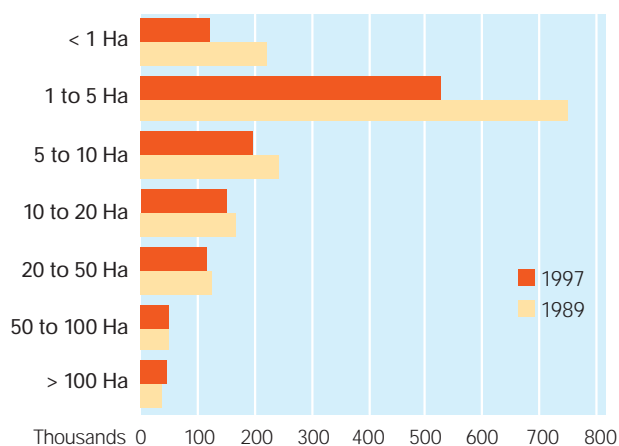
Livestock farming, main species. 1997

	Bovine		Ovine		Caprine		Porcine		Poultry	
	Farms	Heads	Farms	Heads	Farms	Heads	Farms	Heads	Farms	Thous. Heads
SPAIN	202.734	5.656.508	102.832	19.669.370	51.453	2.062.079	138.995	14.226.020	273.685	100.420
Andalusia	8.899	498.897	10.668	2.139.443	13.983	750.636	10.352	1.262.896	24.912	9.411
Aragon	2.206	254.799	6.661	2.604.018	2.472	52.329	4.189	2.070.082	7.853	11.330
Asturias (Princ. of)	29.101	420.351	4.335	73.272	1.852	53.404	10.036	36.521	26.273	629
Balearic (Islands)	1.087	51.006	5.095	388.744	1.867	21.053	4.011	64.281	9.880	554
Canary Islands	1.971	15.552	1.163	35.408	4.134	134.142	753	24.985	2.154	1.373
Cantabria	12.862	354.930	2.367	90.564	1.122	15.732	1.354	9.194	9.850	210
Castile & León	27.552	1.116.562	13.530	4.237.193	3.472	188.599	21.545	2.002.847	33.899	11.414
Castile-La Mancha	3.773	314.508	9.499	3.339.730	4.970	314.203	2.961	626.657	9.593	5.392
Catalonia	6.682	690.010	2.925	912.067	1.957	51.049	8.786	5.050.333	10.768	37.342
Comm of Valencia	638	35.636	2.542	427.778	1.475	73.405	997	605.395	5.792	4.808
Extremadura	10.167	490.878	9.872	3.206.826	5.016	214.387	11.096	630.271	12.771	663
Galicia	82.037	1.000.251	24.154	269.425	3.698	50.134	56.639	509.523	101.379	6.498
Madrid (Comm of)	1.254	78.198	595	159.860	228	20.563	146	29.726	701	971
Murcia (Region of)	230	22.225	2.106	531.604	2.294	85.449	1.478	811.624	2.577	1.993
Navarre (Comm of)	3.024	102.715	2.529	687.018	243	4.673	1.935	388.233	3.039	4.150
Basque Country	10.718	173.997	4.208	323.173	2.404	20.443	2.093	25.864	11.058	1.762
Rioja (La)	533	35.993	583	243.247	266	11.878	624	77.588	1.186	1.920

Use of Utilised Agricultural Area (UAA). Hectares



Number of farms per UAA



For further information:

- 1989 Agricultural Census. Volume I, National Results. Volume II, Pluriprovincial Autonomous Community Results. Volume III, Provincial results. Volume IV, District and Municipal Results. Volume V, National results by techno-economic orientation. (TEO). Volume VI, Autonomous Community results by techno-economic orientation (TEO). Volume R, National summary by autonomous communities and provinces.
- 1993 Farm structures survey. Volume I, National results. Volume II, Autonomous Community results. (18 volumes).
- 1995 Farm structure survey. Electronic publication.
- 1997 Farm structure survey. Project.



Companies

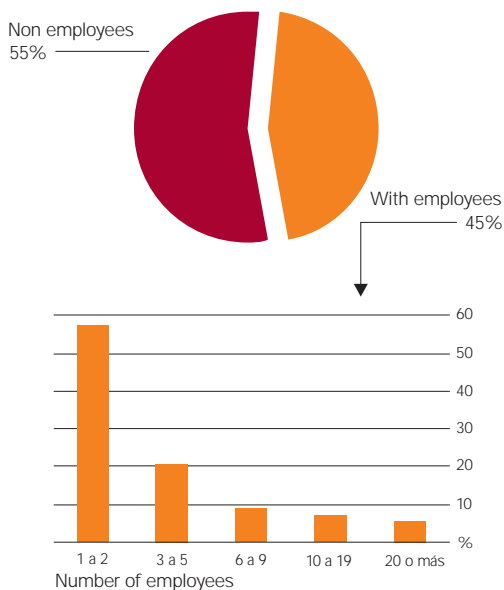
Companies operating by economic sector. 1st January 1999

Employee bracket	Economic sector				
	Total	Industry	Construction	Commerce	Other services
TOTAL	2.518.801	237.782	271.616	786.384	1.223.019
Non employees	1.388.116	78.587	124.322	433.336	751.871
1 to 2 employees	648.771	61.297	68.586	223.519	295.369
3 to 5 employees	235.131	34.888	35.218	72.852	92.173
6 to 9 employees	101.717	20.507	18.251	26.984	35.975
10 to 19 employees	79.423	20.718	14.913	18.266	25.526
20 or more employees	65.643	21.785	10.326	11.427	22.105

Companies by demographic category

Economic sector	Operating			Closed
	Total	Operating	New	
TOTAL	2.518.801	2.179.639	339.162	302.014
Industry	237.782	213.335	24.447	25.192
Construction	271.616	224.527	47.089	35.637
Commerce	786.384	693.912	92.472	99.165
Other services	1.223.019	1.047.865	175.154	142.020

Breakdown of businesses by economic sector and employee bracket



24

	Number of companies (thousands) 1995	Employees (millions) 1995
UE-15	18.050	111,8
Germany	3.335	30,0
Austria	237	2,6
Belgium	595	3,7
Denmark	236	1,6
Spain	2.350	10,9
Finland	180	1,1
France	2.116	15,3
Greece	747	1,7
Ireland	71	0,7
Italy	3.252	14,0
Luxembourg	18	0,2
Netherlands	489	5,2
Portugal	657	2,9
U. Kingdom	3.355	20,1
Sweden	254	2,1

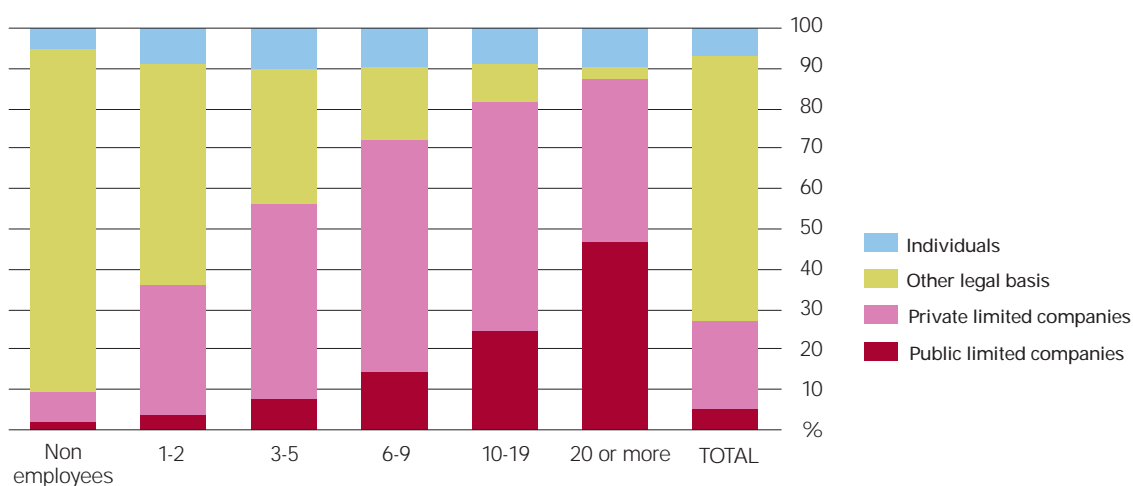
For further information:

- *Central Companies Directory (DIRCE), Statistical Results. Volume I, Companies Data. Volume II, Premises Data* (annual publications).
- *Central Businesses Directory (DIRCE), Statistical Results* (annual electronic publication).

Companies and premises operating by economic sector

	Total		Industry		Construction		Commerce		Other services	
	Compa-nies	Premises	Compa-nies	Premises	Compa-nies	Premises	Compa-nies	Premises	Compa-nies	Premises
SPAIN	2.518.801	2.856.564	237.782	261.856	271.616	290.559	786.384	940.689	1.223.019	1.363.460
Andalusia	359.426	410.011	28.789	32.121	28.132	30.151	129.005	153.133	173.500	194.606
Aragon	78.476	90.988	8.366	9.429	9.851	10.855	23.459	28.921	36.800	41.783
Asturias (Princip. of)	46.612	57.064	3.360	4.378	4.720	5.168	14.464	19.097	24.068	28.421
Balearic (Islands)	67.132	78.935	5.170	5.755	9.443	10.721	18.618	22.933	33.901	39.526
Canary Islands	100.008	118.434	5.891	6.642	8.378	8.923	33.040	41.950	52.699	60.919
Cantabria	31.447	36.406	2.343	2.621	3.787	4.138	9.527	11.724	15.790	17.923
Castile & León	143.953	166.413	12.542	14.237	19.786	21.266	45.943	55.809	65.682	75.101
Castile-La Mancha	98.147	113.875	12.271	13.918	13.679	14.318	33.388	40.339	38.809	45.300
Catalonia	489.656	555.977	55.563	61.380	54.893	59.798	144.269	174.862	234.931	259.937
Comm. Valencia	266.763	297.969	30.038	32.136	26.977	28.878	86.900	101.903	122.848	135.052
Extremadura	46.501	53.605	4.127	4.541	5.196	5.388	16.819	20.610	20.359	23.066
Galicia	157.045	176.136	14.002	15.432	19.618	20.494	52.041	60.981	71.384	79.229
Madrid (Comm. of)	357.833	389.524	25.767	27.354	34.931	36.189	91.857	106.922	205.278	219.059
Murcia (Region of)	65.523	74.109	6.865	7.543	6.977	7.312	22.839	26.906	28.842	32.348
Navarre (Comm. of)	38.294	45.317	3.973	4.668	5.537	6.330	11.849	14.036	16.935	20.283
Basque Country	146.928	162.230	15.707	16.364	17.111	17.586	43.217	49.286	70.893	78.994
Rioja (La)	18.398	21.625	2.843	3.135	2.195	2.538	5.787	7.106	7.573	8.846
Ceuta & Melilla	6.659	7.946	165	202	405	506	3.362	4.171	2.727	3.067

Breakdown of companies by legal status and employee bracket





Industry and energy

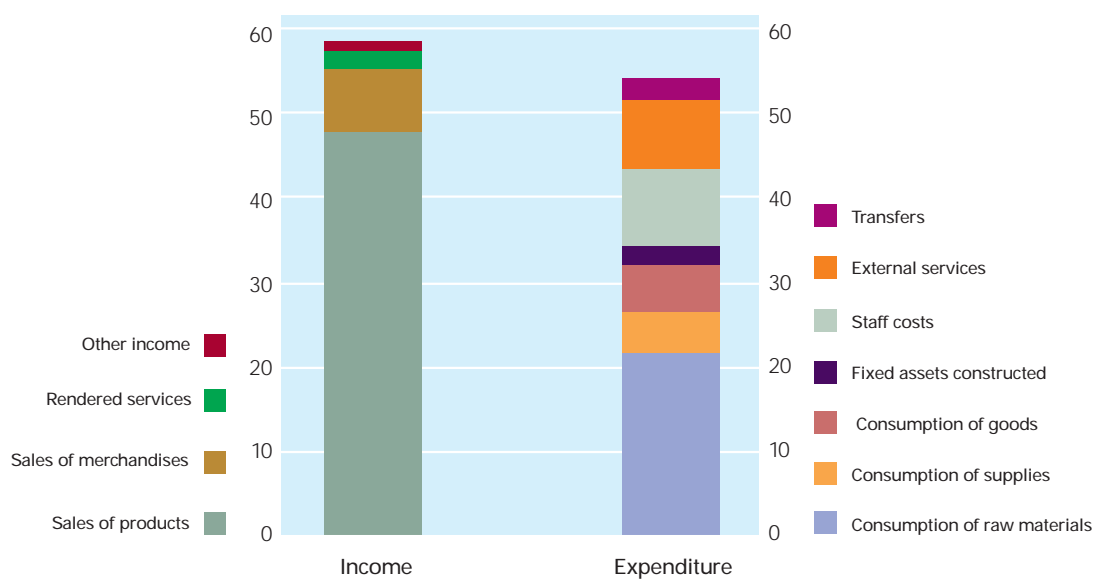
Industrial survey of companies. 1998

	Employees	Turnover ¹	Consumption ¹	Staff costs ¹
TOTAL	2.516.327	57.435.122	34.242.497	9.363.889
Mining and petroleum industries	51.921	2.640.466	1.816.673	273.432
Food, beverages and tobacco	373.411	10.779.052	7.242.639	1.230.539
Textiles, clothing, leather and footwear	315.320	3.513.312	2.104.660	709.009
Wood and cork	97.286	1.184.612	725.157	221.204
Paper, publishing, graphic arts and recorded media reproduction	181.672	3.437.577	1.624.386	714.289
Chemical industry	130.231	4.943.551	2.712.467	755.169
Rubber and plastics	105.911	2.192.847	1.208.006	432.801
Miscellaneous non-metallic mineral products	165.020	3.027.464	1.381.548	601.422
Metallurgy and manufacturing of metallic products	350.903	6.048.000	3.406.866	1.240.739
Machinery and mechanical equipment	162.562	2.917.202	1.683.872	659.762
Electrical, electronic and optical supplies	150.400	3.670.395	2.236.945	670.731
Transport material	206.310	7.957.420	5.761.426	1.000.256
Miscellaneous manufacturing industries	161.203	1.745.452	956.006	406.700
Energy and water	64.178	3.377.772	1.381.846	447.836

¹ Million pesetas

Distribution of income and expenditure

Billion pesetas




Industrial survey of companies. 1998

	Employees	Turnover ¹	Consumption ¹	Staff costs ¹
SPAIN	2.516.327	57.435.122	34.242.497	9.363.889
Andalusia	221.126	5.007.360	3.157.073	718.967
Aragon	96.329	2.534.779	1.581.935	359.605
Asturias (Princip. of)	59.272	1.289.885	720.794	265.438
Balearic (Islands)	28.066	382.939	193.075	79.750
Canary Islands	38.489	768.320	394.839	127.620
Cantabria	31.152	766.336	418.561	132.976
Castile & León	138.493	3.577.566	2.242.808	537.005
Castile-La Mancha	102.579	1.987.212	1.262.337	288.981
Catalonia	641.441	15.191.646	8.861.896	2.558.757
Comm. of Valencia	341.064	6.236.764	3.715.385	1.011.782
Extremadura	25.426	420.005	274.475	61.590
Galicia	153.825	3.264.161	2.080.642	473.351
Madrid (Comm. of)	281.394	7.495.062	4.327.790	1.276.193
Murcia (Region of)	64.000	1.167.533	751.165	171.098
Navarre (Comm. of)	61.969	1.706.950	1.078.255	259.873
Basque Country	204.222	5.000.979	2.798.355	948.676
Rioja (La)	27.479	637.626	383.112	92.227

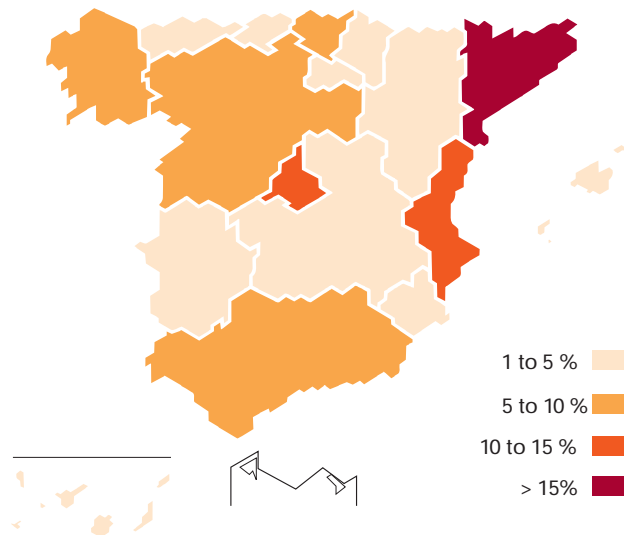
¹ Million pesetas

Distribution of employment in industry



Turnover. 1995
Million Euros

	Food, beverages and tobacco	Transport material
UE-15	577.813	446.728
Germany	133.146	166.924
Austria	11.321	6.127
Belgium	27.812	16.459
Denmark	16.247	1.947
Spain	56.406	34.599
Finland	8.301	2.034
France	98.959	91.821
Greece	5.878	606
Ireland	14.231	678
Italy	60.446	40.517
Luxembourg	557	-
Netherlands	42.098	9.015
Portugal	9.830	4.155
U.Kingdom	80.803	53.136
Sweden	11.773	18.462



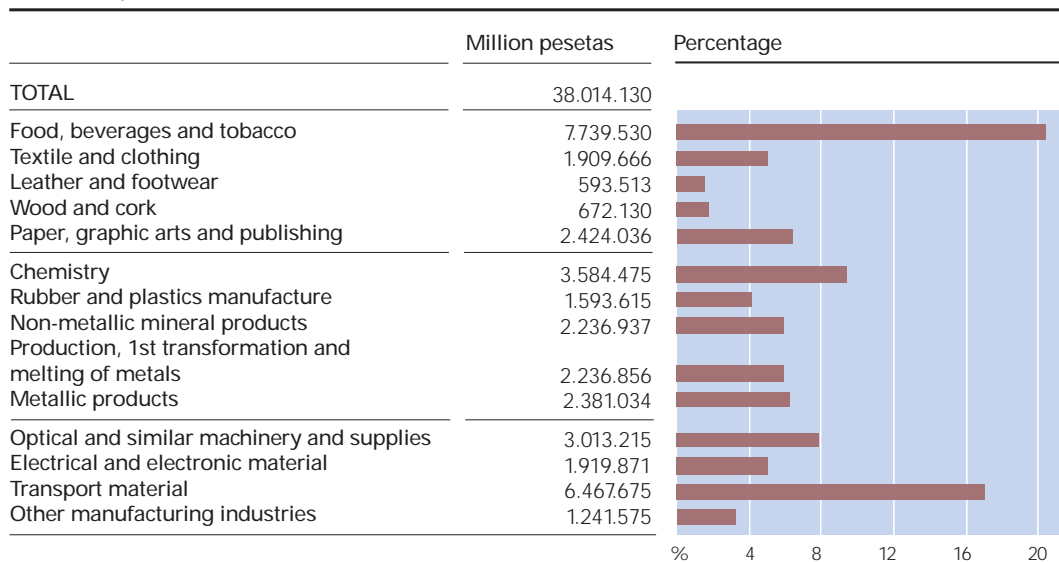
For further information:

- Industrial Companies Survey (annual publication)
- TEMPUS data bank: 4.500 series

Industry and energy

Industrial survey of products. 1998

Industrial product sales

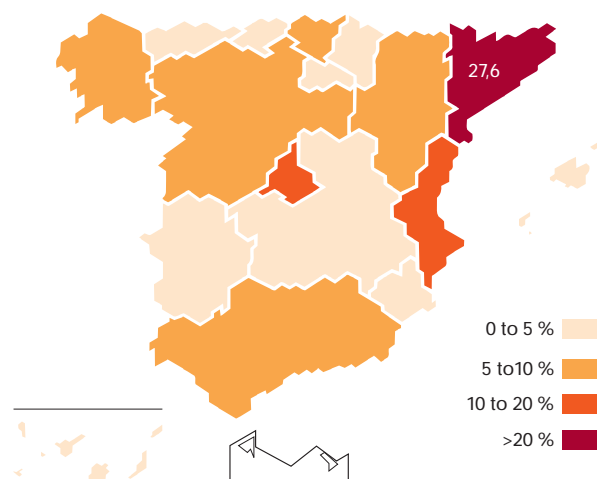


Industrial product sales

Million pesetas

SPAIN	38.014.130
Andalusia	2.932.477
Aragon	1.900.761
Asturias (Princ. of)	940.248
Balearic (Islands)	166.068
Canary Islands	380.702
Cantabria	550.214
Castile & León	2.745.274
Castile-La Mancha	1.224.405
Catalonia	10.482.782
Comm. of Valencia	4.294.412
Extremadura	203.159
Galicia	2.085.659
Madrid (Comm. of)	3.832.775
Murcia (Region of)	732.699
Navarre (Comm. of)	1.368.126
Basque Country	3.668.374
Rioja (La)	505.997

Breakdown of industrial product sales



For further information:

- *Industrial Products Survey* (annual publication).

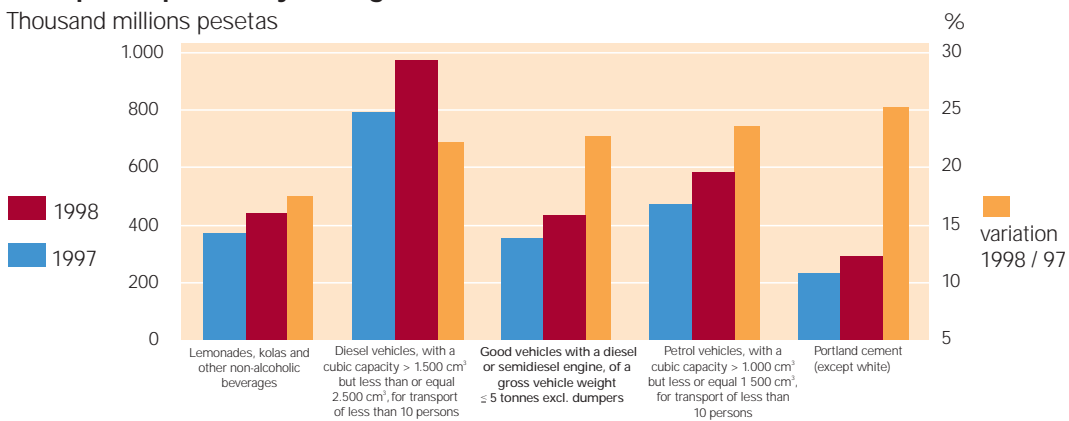
Industrial survey of products. 1998

Principal outputs

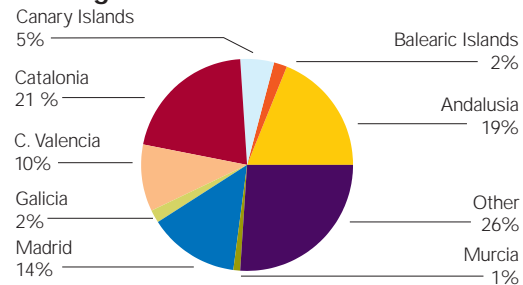
	Product	Quantity	Value (million pesetas)
Tons	Raw, cooked, smoked, in guts or tinned cold meats (except liver), and similars	414.991	205.511
Tons	Prepared food for farm animals: porks	6.546.404	222.647
Thousands litres	Lemonades kolas and other non-alcoholic beverages	3.929.973	438.283
Tons	Paper or corrugated cardboard boxes	2.197.535	248.482
Thousands m ²	Ceramic paving stones and coverings, the maximum surface of which is larger than a square with <7cm sides, varnish/enamel; clay surface >90 cm ²	218.274	177.997
Tons	Portland cement (except white)	31.084.016	291.543
Units	Petrol vehicles, with a cubic capacity > 1.000 cm ³ but less or equal 1 500 cm ³ , for transport of less than 10 persons	1.301.774	1.409.597
Units	Petrol vehicles with a cubic capacity of > 1.500 cm ³ but less than or equal 3.000 cm ³ , for transport of less than 10 persons	414.922	582.210
Units	Diesel vehicles, with a cubic capacity > 1.500 cm ³ but less than or equal 2.500 cm ³ , for transport of less than 10 persons	698.208	970.751
Tons	Good vehicles with a diesel or semidiesel engine, of a gross vehicle weight ≤ 5 tonnes excl. dumpers	285.331	434.078

Principal outputs and year of growth

Thousand millions pesetas



Autonomous communities market share of lemonades, kolas and other non alcoholic beverages

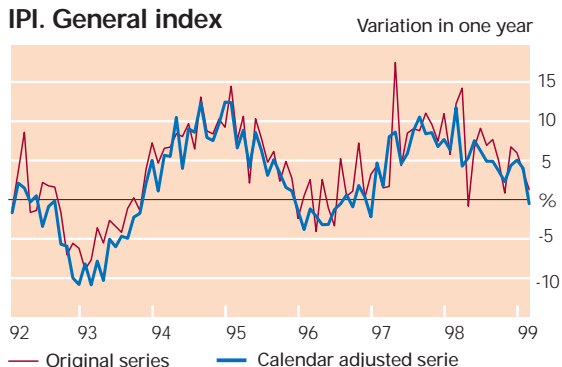


Industry and energy

Industrial Production Indices. IPI Annual average 1998

	Index Base 1990	Variation in one year
GENERAL INDEX	115,1	5,4
INDICES BY BRANCHES OF ACTIVITY		
Energy	105,9	1,1
Non-energetic mineral and by-products, mining and processing		
Chemical industry	117,2	5,5
Metal processing industry. Precision engineering	128,1	8,2
Other manufacturing industries	107,9	4,7
INDICES BY ECONOMIC USE OF THE GOODS		
Consumer goods	113,9	5,5
Investment goods	124,3	8,4
Intermediate goods	113,1	4,2

IPI. General index



	Index Base 1990	Variation in one year
SPAIN	115,1	
Andalusia	111,6	
Aragon	122,8	
Asturias (Princ. of)	102,6	
Balearic (Islands)	100,7	
Canary Islands	110,0	
Cantabria	117,2	
Castilla & León	118,7	
Castilla-La Mancha	109,4	
Catalonia	117,2	
Comm. Valencia	115,1	
Extremadura	111,5	
Galicia	111,3	
Madrid (Comm. of)	115,0	
Murcia (Region of)	101,8	
Navarre (Comm. of)	121,5	
Basque Country	118,4	
Rioja (La)	116,0	

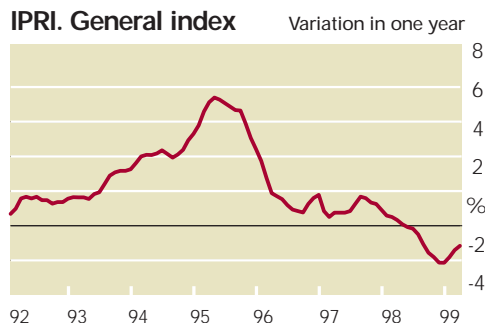
For further information:

- INE Figures-Industrial Production Indices. Provisional data (monthly publication)
- INE Figures-Industrial Price indices. Provisional data (monthly publication)
- Monthly Statistical Bulletin
- Quarterly Bulletin on the Economic Situation
- TEMPUS data BANK: over 6.000 series.

Industrial Price Indices IPRI. Annual average 1998

	Index Base 1990	Variation in one year
GENERAL INDEX	120,2	-0,7
INDICES BY BRANCHES OF ACTIVITY		
Energy	110,7	-7,7
Non-energetic mineral and by-products, mining and processing		
Chemical industry	115,1	-1,0
Metal processing industry. Precision engineering	120,5	1,0
Other manufacturing industries	125,3	0,3
INDICES BY ECONOMIC USE OF THE GOODS		
Consumer goods	127,2	0,4
Investment goods	118,2	0,6
Intermediate goods	114,7	-2,1

IPRI. General index



Primary energy. 1998

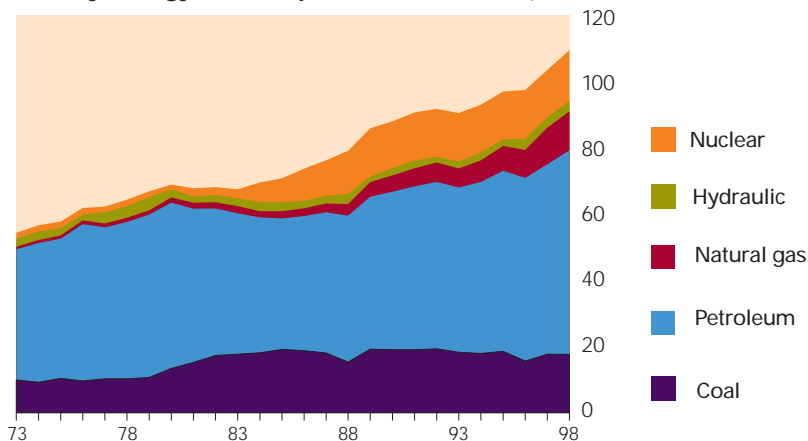
Kpet

	Consumption	Production	Self sufficiency
TOTAL	110.352	28.547	25,9
Coal	17.614	8.959	50,9
Petroleum	61.670	532	0,9
Natural gas	11.816	98	0,8
Nuclear	15.376	15.376	100,0
Hydraulically	3.094	3.094	100,0
Others	489	489	100,0
Import-Export	292	-	-

The energy balances are expressed in **Petroleum Equivalent Tons (pet)**, which is a common unit. One pet is defined as 10 kcal.

The usual units of measurement are converted to pet on the basis of the lowest calorific value of each fuel.

Primary energy consumption. Thousands kpet

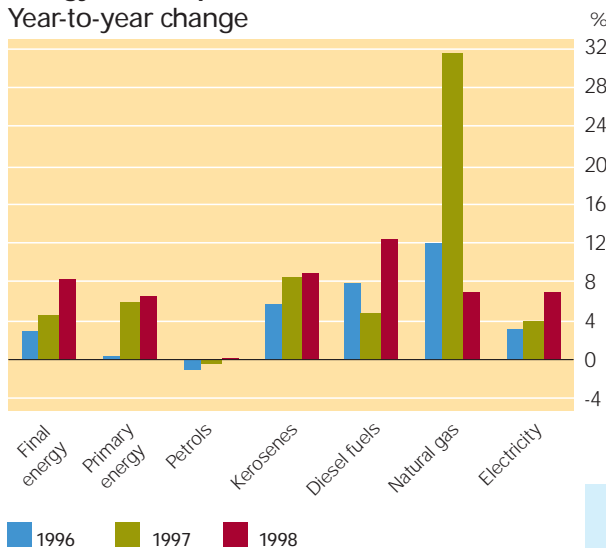


Primary energy consumption. 1995. Pet / inhabitant

UE-15	2,5
Germany	2,9
Austria	2,7
Belgium	3,6
Denmark	3,0
Spain	1,7
Finland	4,3
France	2,6
Greece	1,6
Ireland	2,2
Italy	2,0
Netherlands	3,3
Portugal	1,5
U. Kingdom	2,6
Sweden	3,9

Energy consumption indicators

Year-to-year change



Final energy consumption. 1998

Kpet	%
TOTAL	80.103
Coal	2.429
Petroleum products	53.797
Kerosenes	4.122
Unleaded petrol	4.586
Other petrols	5.039
Diesel fuel A & B	18.953
Diesel fuel C	3.640
Fuel-oil	2.737
Naphta	3.125
Other products	11.595
Gas	9.627
Electricity	14.251

Source: *Energy Situation*, Ministry of Industry and Energy



Technology

Internal expenditure and personnel in R&D. 1997

Thousand pesetas and full-time equivalent personnel¹

Sector	R&D expend.	Personnel (FEP)	
	Total	Total	Resear- chers
TOTAL	672.016.663	87.150	53.883
BUSINESSES	327.922.134	30.023	12.009
Aerospatial	27.791.775	2.273	960
Electrical machinery and electronic equipment	52.388.607	4.725	2.251
Office machines and computers	7.841.111	475	244
Pharmaceutical industry	36.874.955	3.035	1.348
Other manufacturing industries	155.011.348	15.181	5.040
Non-manufacturing industries	48.014.338	4.334	2.166
PUBLIC ADMINISTRATION	116.727.540	19.189	10.490
HIGHER EDUCATION	219.950.845	36.843	30.649
PRIVATE NON-PROFIT INSTITUTIONS	7.416.144	1.095	735

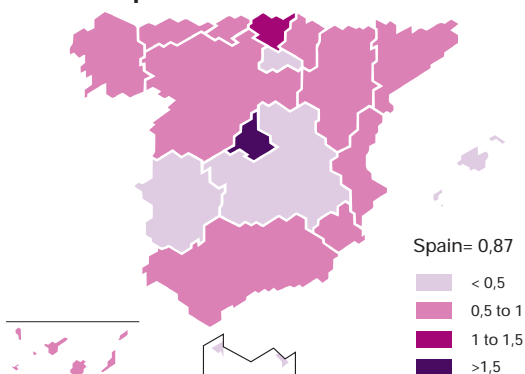
¹ Full-time equivalent personnel (FEP) is the sum of full-time personnel plus the equivalent of full-time work performed by part-time personell



R&D expenditure over GDP at market prices. 1997

	(%)
UE15	1,83
Germany	2,31
Austria	1,52
Belgium	1,58
Denmark	2,03
Spain	0,86
Finland	2,78
France	2,23
Ireland	1,43
Italy	1,08
Netherlands ¹	2,09
Portugal	0,65
U.Kingdom	1,87
Sweden	3,85
1 Year 1996	

Internal expenditure on R&D over GDP at market prices. 1996

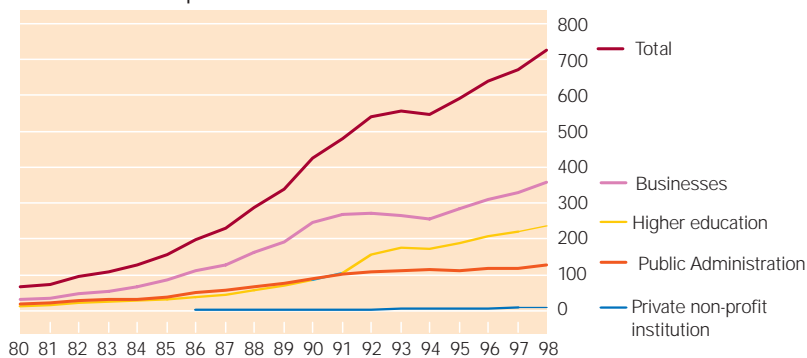


For further information:

- *INE Figures-Scientific Research and Technological Development (R&D)* (annual publication)
- *Statistics on Scientific Research and Technological Development (R&D)Activities*(annual publication)

Evolution of internal expenditure on R&D

Thousand millions pesetas



Technological innovation in enterprises. 1996

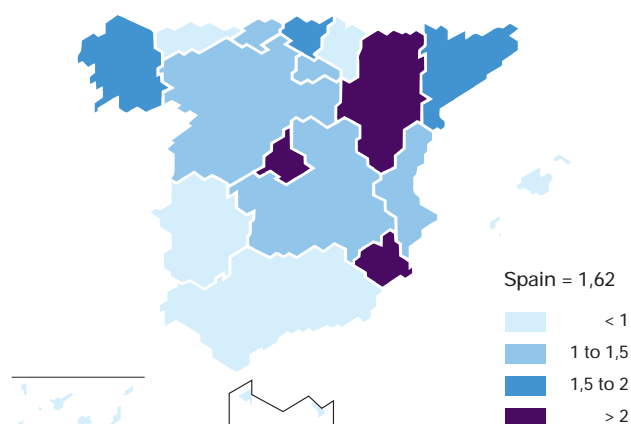
Branch of activity	Expenditure on innovation (million pesetas)	Turnover (million pesetas)	Expenditure on innovation as a % of turnover	Turnover due to new or improved products (%)
TOTAL	794.196	49.108.198	1,6	36,5
Mining and petroleum	32.141	2.640.603	1,2	35,5
Food, beverages and tobacco	84.578	9.538.986	0,9	29,7
Textile, wearing and furnindustry, leather and foot	24.634	3.055.637	0,8	34,9
Wood and cork (except furniture)	10.320	946.820	1,1	19,2
Paper, publishing, printing and recording	42.570	3.019.507	1,4	34,1
Chemical industry (except pharmacy)	53.643	3.167.850	1,7	29,6
Pharmacy	54.739	1.166.748	4,7	20,8
Rubber and plastics	24.728	1.746.610	1,4	30,3
Non metallic minerals	32.950	2.330.740	1,4	42,0
Metallurgy and Fabricated metal products	62.757	5.018.399	1,3	28,6
Machinery and mechanical plant	42.462	2.378.657	1,8	55,5
Office, calculation and computer machinery	7.185	583.776	1,2	70,5
Electrical machinery	31.429	1.398.894	2,2	42,3
Electronic components	8.394	170.006	4,9	34,8
Radio, television and communication equipments	47.822	572.033	8,4	80,0
Instruments optics and watchmaking	10.610	331.588	3,2	54,7
Cars	128.405	5.403.538	2,4	57,4
Ships	12.348	320.399	3,9	56,9
Aerospace	28.507	145.155	19,6	32,3
Other transport equipment	8.499	229.916	3,7	83,1
Other manufacturing	5.675	385.973	1,5	44,6
Recycling	334	33.128	1,0	37,7
Electricity, gas and water	27.701	3.590.465	0,8	7,9



Demands of patents 1996

UE15	35.572
Germany	14.517
Austria	786
Belgium	893
Denmark	672
Spain	478
Finland	851
France	5.641
Greece	41
Ireland	135
Italy	2.816
Luxembourg	37
Netherlands	2.048
Portugal	11
U. Kingdom	4.767
Sweden	1.882

Expenditure on innovation as a % turnover



For further information:

- *Technological Innovation in Enterprises Survey*



Commerce

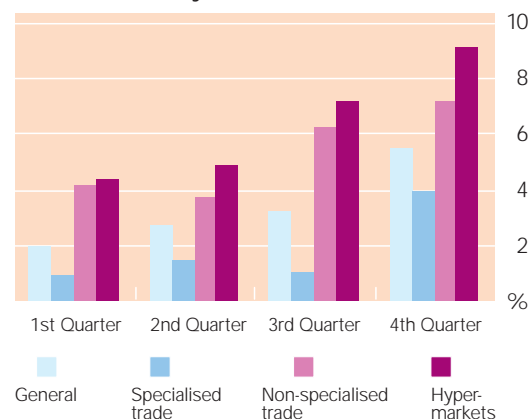
Retail Trade Indices. RTI

Sales indices. Monthly average 1998

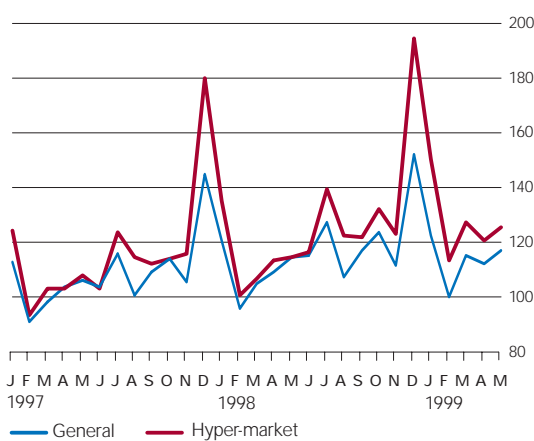
	Index Base 1994	Variation in one year
GENERAL INDEX	116,5	7,1
Food	109,9	5,0
Personal goods	113,5	5,4
Household goods	124,3	11,3
Other consumer goods	129,0	10,0
Specialised stores	117,0	7,5
Non-specialised stores	116,8	7,0
Non-specialised hypermarkets	126,6	8,9
Food	120,1	6,2
Personal goods	138,2	13,0
Household goods	131,0	10,5
Other consumer goods	127,3	10,3

Employment indices. 1998

Variation in one year



Sales indices. Types of stores



Sales indices. Groups of goods



For further information:

- *INE figures.* Retail trade Indices. 1994 base period. Provisional data. (Monthly publication)
- *Monthly Statistical Bulletin.*
- **TEMPUS** data bank



Transport

Roads. 1998

	Kms
Dual carriageways	7.423
Toll motorways	2.073
Main roads	163.273
Secondary roads	501.053

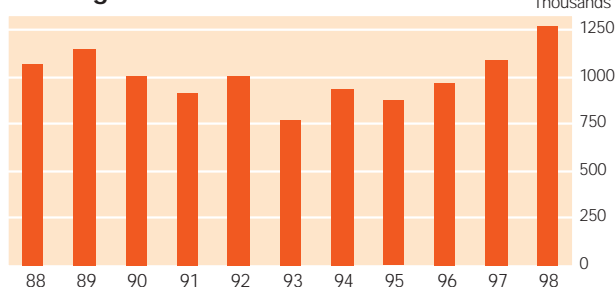
Motor vehicles. 1998

	On the road (thousands)	Registered (thousands)
Cars	16.050	1.283
Motorcycles	1.361	56
Lorries	3.393	268
Buses and minibuses	52	4

Urban transport. 1998

	Passengers (thousands)
Buses	1.719.219
Underground	764.445

Cars registered



Cars per 1,000 inhabitants							
UE-15	445	Germany	501	Spain	376	Ireland	272
Portugal	277	Austria	458	Finland	379	Italy	571
U. Kingdom	369	Belgium	424	France	477	Luxembourg	559
Sweden	413	Denmark	329	Greece	223	Netherlands	370

Intercity road and rail transport. 1998

	Passengers (thousands)	Pass.-Km (millions)	Tm (thousands)	Tm-Km (millions)
Road (regular service)	668.028	22.017	719.337	125.268
Rail-RENFE	409.470	17.476	25.653	11.316

Air and sea transport. 1998

	Passengers (thousands)	Tm (millions)
Domestic flights	47.575	234
International flights	68.795	314
Coastal shipping	12.592	64.655
Foreign shipping	2.756	227.265

¹ Embarkations and disembarkations

Postal service. 1998

	Number (millions)
Posted correspondence	4.574
Delivered correspondence	5.151

For further information:

- *INE figures. Regular domestic passenger transport.* (monthly publication)
- *Passenger transport.* (annual publication)
- *Monthly Statistical Bulletin.*
- *Activities annexed to transport.*

Other sources

- Roads: Ministry of Development
- Rail transport: RENFE
- Air transport: General Directorate of Civil Aviation
- Sea transport: State Ports
- Postal and orders service: General Secretary of Communications

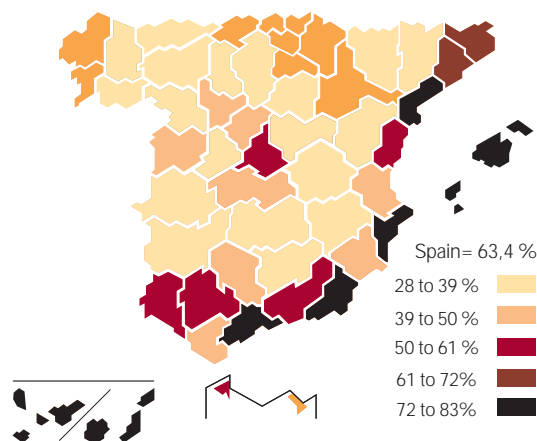


Tourism

Overnight Stays at Hotels. 1998

	Guests			Nights			Occupancy	Average stay
	Total	Spaniards	Foreigners	Total	Spaniards	Foreigners		
Total	45.781.775	25.582.823	20.198.952	178.355.712	66.552.436	111.803.276	63,41	3,90
January	2.120.497	1.315.921	804.576	7.597.124	3.055.935	4.541.189	44,59	3,58
February	2.479.831	1.576.530	903.301	8.567.160	3.585.774	4.981.385	52,63	3,45
March	3.163.873	1.939.933	1.223.939	10.691.947	4.629.843	6.062.104	55,91	3,38
April	3.998.560	2.249.178	1.749.381	13.429.032	5.796.419	7.632.613	60,84	3,36
May	4.491.571	2.179.428	2.312.143	16.963.253	5.158.896	11.804.357	61,20	3,78
June	4.455.473	2.264.036	2.191.436	18.709.302	5.713.956	12.995.346	66,41	4,20
July	4.940.251	2.604.463	2.335.788	22.322.939	7.849.231	14.473.707	74,06	4,52
August	5.473.512	3.012.251	2.461.261	25.664.414	10.251.982	15.412.432	84,89	4,69
September	5.038.851	2.647.012	2.391.838	21.140.783	7.357.544	13.783.239	72,75	4,20
October	4.259.193	2.291.857	1.967.337	16.292.931	5.441.245	10.851.686	61,08	3,83
November	2.813.351	1.814.421	998.930	8.899.445	4.005.497	4.893.948	52,03	3,16
December	2.546.813	1.687.792	859.020	8.077.382	3.706.114	4.371.269	45,75	3,17

Occupancy rate by bed-places




	Guests	Nights
SPAIN	45.781.775	178.355.712
Andalusia	8.981.298	29.238.909
Aragon	1.385.473	2.893.274
Asturias (Princ. of)	814.500	1.726.711
Balearic (Islands)	5.648.155	46.349.372
Canary Islands	3.047.361	24.437.652
Cantabria	706.569	1.742.196
Castile & León	2.621.988	4.065.723
Castile-La Mancha	1.311.008	1.975.963
Catalonia	7.525.014	28.164.360
Comm. Valencia	3.336.224	16.398.606
Extremadura	812.550	1.268.843
Galicia	1.839.754	4.124.988
Madrid (Comm. of)	5.045.036	9.891.482
Murcia (Region of)	614.353	2.204.495
Navarre (Comm. of)	359.359	661.477
Basque Country	1.313.295	2.404.601
Rioja (La)	300.238	549.637
Ceuta & Melilla	119.599	257.422

For further information:

- INE figures. *Guest Staying at Hotels provisional data* (monthly publication).
- *Guest Staying at Hotels* (annual electronic publication).
- *Monthly Statistical Bulletin*.

Occupancy at camp sites. 1998



Overnight stays at hotels. 1997
(Millions)

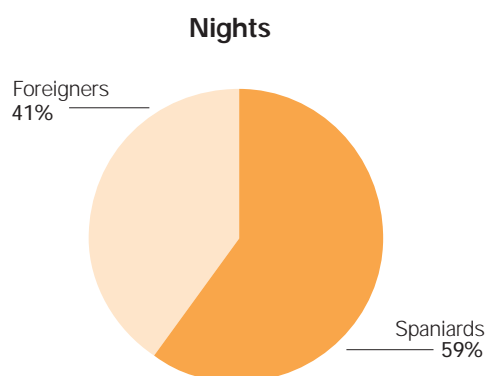
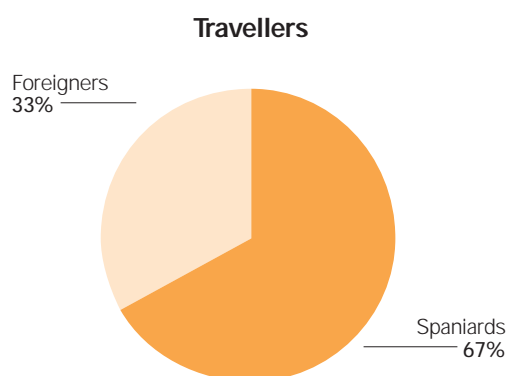
UE-15	1134
Germany	173
Austria	69
Belgium	13
Denmark	11
Spain	167
Finland	12
France	153
Greece	53
Ireland	19
Italy	205
Luxembourg	1
Netherlands	21
Portugal	29
U. Kingdom	183
Sweden	19

	Travelers		Nights	
	Spaniards	Foreigners	Spaniards	Foreigners
SPAIN	2.927.533	1.440.250	13.157.926	8.995.687
Andalusia	482.753	211.240	1.610.349	830.682
Aragon	142.994	71.488	406.258	167.306
Asturias (Princ. of)	115.728	21.055	399.176	47.607
Balearic (Islands)	11.075	7.197	31.015	43.409
Canary Islands ¹	-	-	-	-
Cantabria	127.196	49.345	558.988	144.229
Castile & León	164.497	90.247	533.258	126.883
Castile-La Mancha	66.619	25.550	176.809	43.757
Catalonia	948.784	640.169	5.770.387	5.387.369
Comm. of Valencia	336.456	150.529	1.857.569	1.641.080
Extremadura	49.304	9.195	128.029	17.255
Galicia	110.530	36.316	499.812	80.078
Madrid (Comm. of)	149.221	31.598	326.750	57.685
Murcia (Region of)	84.130	21.327	424.917	244.729
Navarre (Comm. of)	24.005	10.250	64.473	25.630
Basque Country	56.260	56.013	162.176	121.688
Ceuta & Melilla ²	0	0	0	0

1 In this community the survey is not done, it has only one establishment.

2 The survey is not done in these autonomous cities as there are no establishments there.

Occupancy at camp sites



For further information:

- *INE Figures. Guest Staying at Camp Sites.* (annual electronic publication)
- *Guest Staying at Camp Sites.* (annual electronic publication)
- *Hotel companies structure. survey. 1996*



Finances

General Government. 1998

Euro millions

General Government deficit	9.002
General Government debt	334.919
<hr/>	
Total resources:	204.177
Current income and wealth taxes	57.503
Taxes on production and imports	55.580
Social Security contributions	69.315

1 euro = 166,386 pesetas



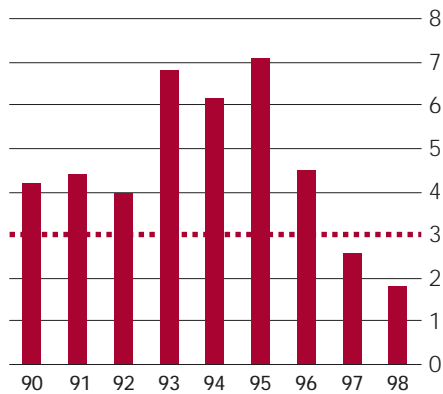
General Government debt 1998

(as a % of GDP)

Germany	61,0
Austria	63,1
Belgium	117,3
Denmark	58,1
Spain	65,6
Finland	49,6
France	58,5
Greece	106,5
Ireland	52,1
Italy	118,7
Luxembourg	6,7
Netherland	67,7
Portugal	57,8
U. Kingdom	49,4
Sweden	75,1

General Government deficit

% of GDP



Interest rates

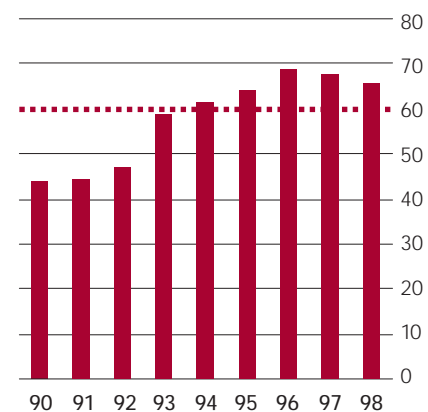
Government bond yields ten years



- Spain
- Upper limit of convergence of the EU countries
- UME-11: Countries in the euro area

General Government debt

% of GDP



Sources

Ministry of Finance
Bank of Spain

For further information:

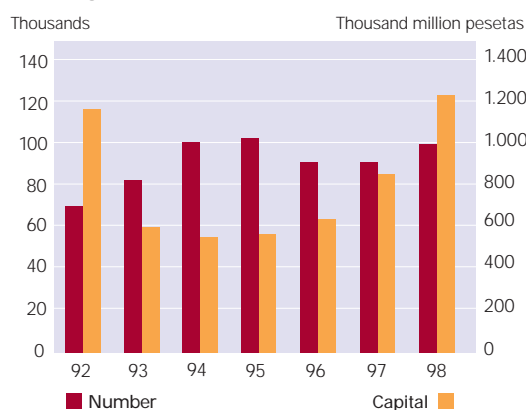
- *Spanish Economy Financial Accounts* (annual publication)
- *Economic Bulletin* (monthly publication)
- *Statistical Bulletin* (monthly publication)

Trading companies. 1998 (P)

	Number	Capital ¹
Established	99.552	1.255,5
- Joint stock	3.977	558,0
- Limited liability	95.559	597,6
- Other	16	99,9
Comp. increasing capital	28.771	3.003,4
- Joint stock	7.429	2.007,7
- Limited liability	21.342	995,7
- Other		
Dissolved	7.970	-

(P) Provisional data

Trading companies established

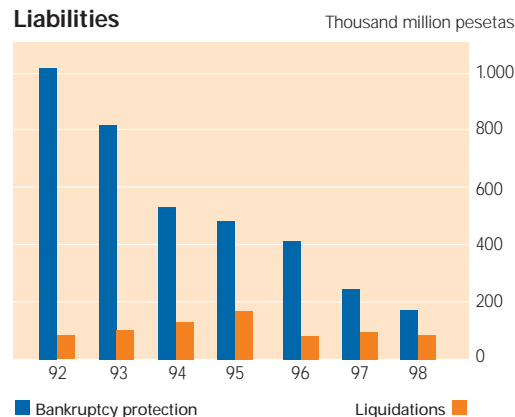


Bankruptcy protection and liquidations. 1998

	Number	Assets ¹	Liabilities ¹
Bankruptcy protection	348	221,9	173,5
Liquidations	548	45,9	85,7

¹ Thousand million pesetas

Liabilities



Mortgages. 1998

	Number	Amount ¹
Total	632.450	6.475,4
Rural land	22.822	251,7
- Unirrigated	18.285	197,1
- Irrigated	4.537	54,5
Urban land	609.628	6.223,8
- Housing	529.565	4.924,3
- Plots	16.844	533,9
- Others	63.219	765,5

¹ Thousand million pesetas

For further information:

- *Dishonoured Trade Bills Statistics* (monthly INE figures and annual electronic publication)
- *Mortgages Statistics* (monthly INE figures and annual electronic publication)
- *Companies Statistics* (monthly INE figures and annual electronic publication)
- *Statistics on Suspension of Payments and Bankruptcies* (monthly INE figures and annual electronic publication)
- *Monthly Statistical Bulletin*
- **TEMPUS** data bank



Foreign sector

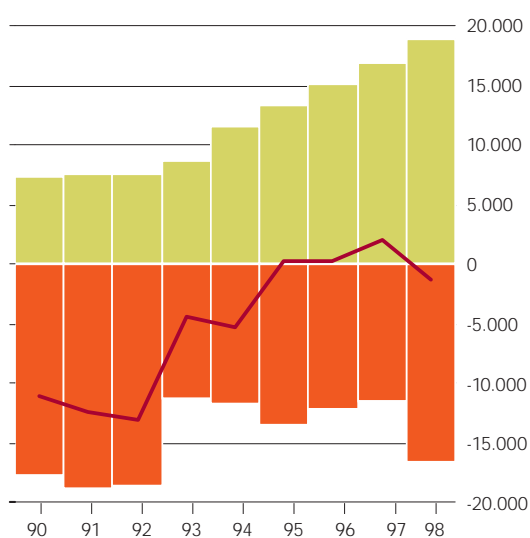
Balance of payments. 1998

Euro millions

	Balance	Receipts	Payments
Current account	-1.268,7	167.024,5	168.293,2
Goods	-16.675,8	98.484,6	115.160,4
Services	18.990,5	43.972,9	24.982,4
-Tourism and travel	22.302,4	26.793,4	4.491,0
Revenue	-6.746,3	13.027,5	19.773,8
-Investments Income	-6.750,8	12.750,5	19.501,3
Current transfers	3.162,9	11.539,5	8.376,7
Capital account	5.623,7	6.363,1	739,4
	CI-CA	Net changes in liabilities (CI)	Net changes in assets (CA)
Financial account	-989,8	65.681,5	66.671,3
Spanish investments abroad	-57.293,4	-	57.293,4
Foreign investments in Spain	25.505,6	25.505,6	-
Other investment	18.550,4	40.175,9	21.625,6
Reserves assets	12.247,7	-	-12.247,7

Trend in Current Account

Euro millions

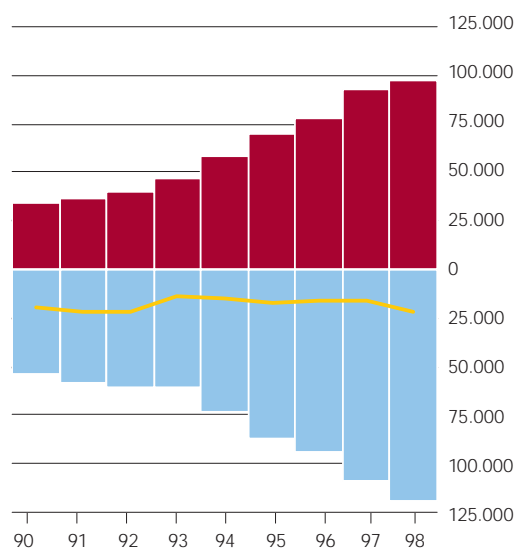


■ Services account ■ Goods account

— Current account balance

Trend in Foreign trade

Euro millions



■ Imports

■ Exports

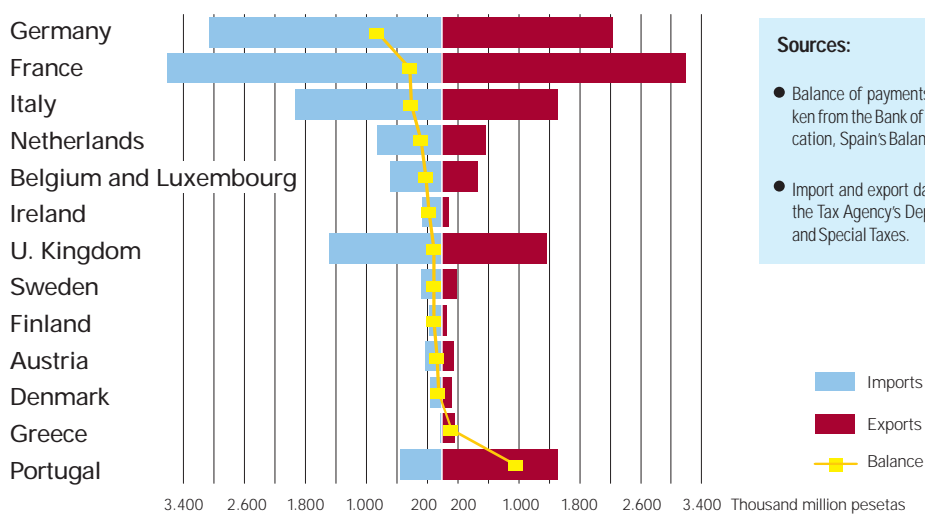
— Foreign trade balance

Imports and exports. 1998

Thousand million pesetas

	Balance	Exports	Imports
Economic use of goods			
Total	-3.548,4	16.289,6	19.838,0
Consumer goods	1.479,7	6.654,2	5.174,6
-Food, beverages and tobacco	656,7	2.052,9	1.396,1
-Cars	986,0	2.425,8	1.439,9
-Energy products	26,8	37,1	10,3
-Others	-189,8	2.138,4	2.328,3
Intermediate goods	-3.907,5	7.298,8	11.206,3
-Agriculture, forestry and fishing products	-308,9	290,9	599,8
-Intermediate energy products	-946,2	328,2	1.274,4
-Intermediate industrial products	-2.652,4	6.679,8	9.332,1
Investment goods	-1.120,6	2.336,5	3.457,1
-Machinery and other equipment goods	-1.181,9	1.298,5	2.480,5
-Transport material	274,4	846,5	572,1
-Others	-213,1	191,5	404,6
Geographic areas			
Total	-3.548,4	16.289,6	19.838,0
European Union	-1.712,9	11.576,8	13.289,7
Rest of Europe	139,8	1.086,7	946,9
United States and Canada	-485,1	759,1	1.244,2
Central and South America	307,5	1.080,9	773,4
Asia	-1.613,9	928,6	2.542,5
-Japan	-456,9	148,6	605,5
Africa	-367,0	601,8	968,8
Oceania	0,5	72,9	72,4
Others	182,7	182,8	0,1

Breakdown of trade between Spain and other EU countries



Sources:

- Balance of payments data have been taken from the Bank of Spain's annual publication, Spain's Balance of Payments
- Import and export data were supplied by the Tax Agency's Department of Customs and Special Taxes.



National Accounts

Gross Domestic Product at market prices (GDP mp)

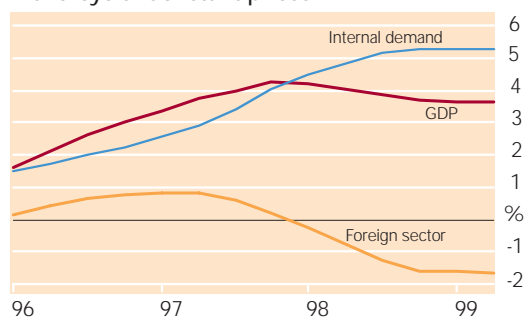
Current prices

Thousand million pesetas

Transactions	1995 (P)	1996 (P)	1997 (P)	1998 (P)
Final consumption expenditure	56.714	59.846	62.920	66.617
-Final consumption expenditure of households	43.036	45.435	47.941	50.930
-Final consumption expenditure of NPISH's	519	543	560	595
-Final consumption expenditure of general Government	13.159	13.868	14.419	15.092
Gross capital formation	16.264	16.886	18.080	20.058
-Gross capital formation	16.015	16.674	17.909	19.800
-Changes in inventories	249	212	171	258
Exports of goods and services	16.465	18.442	21.903	23.605
Imports of goods and services	16.601	18.061	21.121	23.311
GDPmp	72.842	77.113	81.782	86.969
Agriculture	3.100	3.563	3.471	3.468
Energy	2.748	2.906	3.025	3.064
Industry	12.750	13.302	14.269	15.189
Construction	5.304	5.355	5.573	6.048
Services	43.238	45.771	48.495	51.442
-Market services	32.833	34.767	37.125	39.562
-Non-market services	10.405	11.004	11.370	11.880
Taxes less subsidies on products	5.702	6.216	6.949	7.758
GDPmp	72.842	77.113	81.782	86.969
Compensation of employees	36.354	38.216	40.639	43.595
Property income and mixed income	30.160	32.077	33.557	35.069
Taxes on production and imports	7.948	8.447	9.209	10.275
Subventions	1.620	1.627	1.623	1.970
GDPmp	72.842	77.113	81.782	86.969

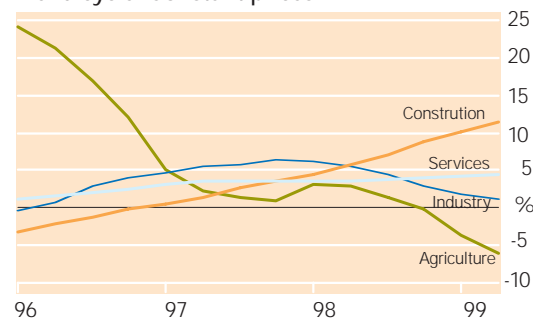
Contributions to growth of GDP

Trend-cycle. Constant prices



Growth rate over previous year

Trend cycle. Constant prices



For further information:


- *National Accounts of Spain. 1995 Base* (annual publication)
- *Quarterly Bulletin on the Situation* (quarterly publication)
- *Regional Accounts of Spain. 1995 Base* (annual publication)
- TEMPUS data bank
- EUROSTAT

Gross Domestic Product at market prices (GDP mp). 1995 constant prices
Year-to-year rates of growth

Transactions	1996 (P)	1997 (P)	1998 (P)
Final consumption expenditure	1,9	2,8	3,6
-Final consumption expenditure of households	2,1	2,9	4,1
-Final consumption expenditure of NPISH's	0,9	1,1	4,2
-Final consumption expenditure of general government	1,3	2,7	2,0
Gross capital formation	1,7	4,6	9,6
-Gross capital formation	2,0	5,0	9,2
-Changes in inventories	(*) -0,1	(*) -0,1	(*) 0,1
Exports of goods and services	10,3	15,1	7,1
Imports of goods and services	8,1	12,8	11,1
GDPmp	2,3	3,8	4,0
Agriculture	18,3	2,4	1,8
Energy	4,1	4,7	2,2
Industry	1,3	5,8	5,3
Construction	-1,7	2,0	6,5
Services	1,7	3,1	3,1
-Market services	1,8	3,5	3,6
-Non market services	1,5	2,0	1,4
Taxes less subsidies on products	3,5	6,9	6,9
GDPmp	2,3	3,8	4,0

(P) Provisional estimate

* Contribution to GDP growth

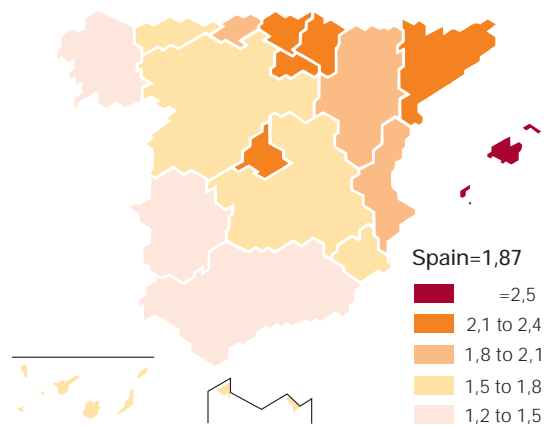


GDP mp per capita at current prices and exchange rates
Euros

	1990	1994	1998
Germany (a)	18.690	21.400	23.290
Austria	16.240	20.540	23.480
Belgium	15.460	19.090	21.680
Denmark	19.760	23.640	28.040
Spain	10.250	10.720	12.900
Finland	21.290	16.220	21.680
France	16.570	19.300	21.630
Greece	6.470	7.990	10.010
Ireland	10.520	13.060	20.670
Italy	15.110	14.860	18.060
Luxembourg	22.160	28.350	34.400
Netherlands	14.890	18.330	21.410
Portugal	5.500	7.540	9.630
U. Kingdom	13.260	14.680	20.610
Sweden	21.160	19.030	22.930

GDP per capita. 1996

Million pesetas





Elections

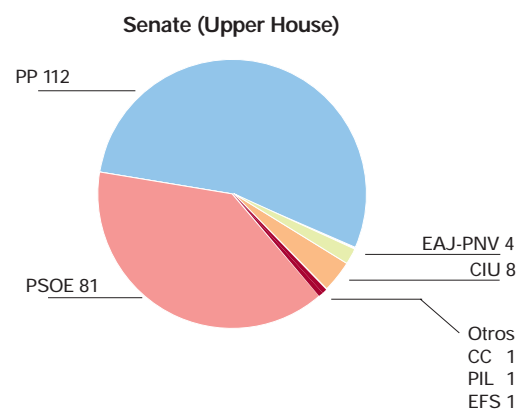
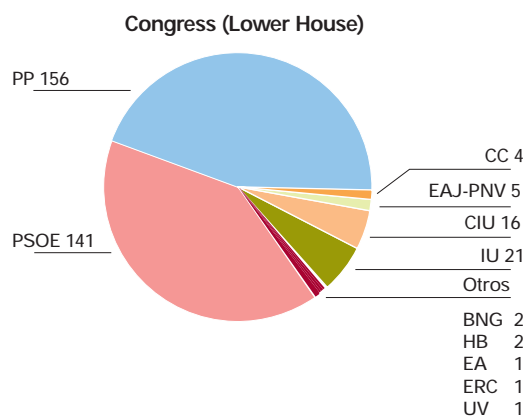
Municipal elections of June 13, 1999

	Electors with a right to vote				Electors (P)	Participation %
	Total	Spaniards living in Spain	Spaniards living abroad	EU and Norwegian citizens living in Spain		
SPAIN	33.832.528	32.873.743	887.513	71.272	21.461.497	63,4
Andalusia	5.891.732	5.760.809	117.032	13.891	3.768.309	64,0
Aragon	1.018.352	999.779	17.900	673	660.344	64,8
Asturias (Princ. of)	980.036	933.708	45.651	677	620.005	63,3
Balearic Islands	646.030	632.484	6.902	6.644	372.316	57,6
Canary Islands	1.374.096	1.331.063	36.330	6.703	824.807	60,0
Cantabria	465.468	452.103	13.018	347	319.466	68,6
Castile & León	2.185.748	2.110.267	73.948	1.533	1.483.322	67,9
Castiea-La Mancha	1.413.559	1.394.761	18.241	557	1.057.782	74,8
Catalonia	5.287.977	5.193.562	84.486	9.929	2.940.981	55,6
Comm. of Valencia	3.362.214	3.300.004	44.584	17.626	2.295.145	68,3
Extremadura	875.747	855.851	19.529	367	651.038	74,3
Galicia	2.530.467	2.283.493	244.246	2.728	1.568.616	62,0
Madrid (Comm. of)	4.286.359	4.177.636	102.200	6.523	2.591.232	60,5
Murcia (Region of)	911.918	894.863	16.078	977	616.300	67,6
Navarra (Comm. of)	462.113	451.275	10.485	353	299.683	64,9
Basque Country	1.809.174	1.779.716	27.910	1.548	1.172.333	64,8
Rioja (La)	229.581	224.097	5.337	147	157.624	68,7
Ceuta	54.576	53.197	1.375	4	33.556	61,5
Melilla	47.381	45.075	2.261	45	28.638	60,4

(P) Provisional data

General elections. 1996

Seats distribution



PP (Popular Party)
 PSOE (Spanish Socialist Workers Party)
 IU (United Left)
 CIU (Convergence and Union)
 EAJ-PNV (Eusko Alderdi Jeltzalea-Basque Nationalist Party)
 CC (Canary Coalition)
 EFS (Grouping of voters "Eivissa i Formentera al Senat")

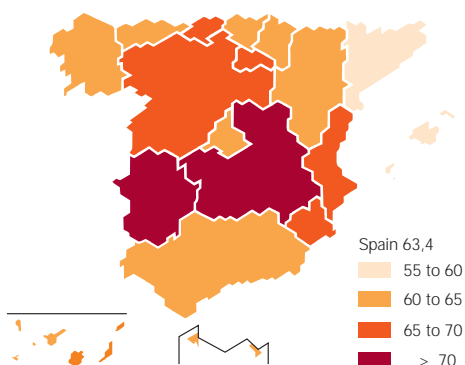
BNG (Galician Nationalists Bloc)
 HB (Herri Batasuna)
 EA (Eusko Alkartasuna)
 ERC (Republican Left of Catalonia)
 UV (Valencian Union)
 PIL (Independists Party of Lanzarote)

Elections to the European Parliament of June 13, 1999

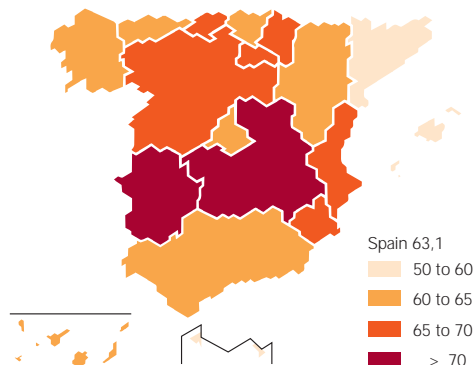
	Electors with a right to vote				Electors	Participation %
	Total	Spaniards living in Spain	Spaniards living abroad	EU citizens living in Spain		
SPAIN	33.816.379	32.872.169	879.217	64.993	21.334.125	63,1
Andalusia	5.888.155	5.760.604	115.257	12.294	3.748.174	63,7
Aragon	1.017.995	999.737	17.623	635	654.487	64,3
Asturias (Princ. of)	979.377	933.677	45.045	655	621.075	63,4
Balearic Islands	645.460	632.461	6.831	6.168	367.947	57,0
Canary Islands	1.373.362	1.330.996	36.250	6.116	826.012	60,1
Cantabria	465.281	452.073	12.886	322	315.979	67,9
Castile & León	2.184.959	2.110.179	73.327	1.453	1.468.245	67,2
Castile-La Mancha	1.413.209	1.394.729	17.945	535	1.055.599	74,7
Catalonia	5.285.935	5.193.243	83.566	9.126	2.899.259	54,8
Comm. of Valencia	3.359.528	3.299.836	43.936	15.756	2.285.576	68,0
Extremadura	875.399	855.812	19.243	344	649.193	74,2
Galicia	2.529.323	2.283.356	243.391	2.576	1.539.370	60,9
Madrid (Comm. of)	4.284.635	4.177.417	101.164	6.054	2.605.318	60,8
Murcia (Region of)	911.647	894.837	15.875	935	616.326	67,6
Navarre (Comm. of)	461.969	451.243	10.377	349	301.383	65,2
Basque Country	1.808.666	1.779.621	27.561	1.484	1.167.867	64,6
Rioja (La)	229.552	224.087	5.320	145	156.683	68,3
Ceuta	54.557	53.194	1.359	4	31.269	57,3
Melilla	47.370	45.067	2.261	42	24.363	51,4

Participation %, June 13, 1999

Municipal elections



Elections to the European Parliament



For more information:

Activities of the Electoral Census office:

- General elections and elections to the Parliament of Andalusia 1996
- Elections to the Parliament of Galicia 1997
- Elections to Basque Parliament 1998